

APP CRS <b>048°</b>	Rwy Idg TDZE Apt Elev	<b>N/A</b> <b>N/A</b> <b>454</b>
------------------------	-----------------------------	--

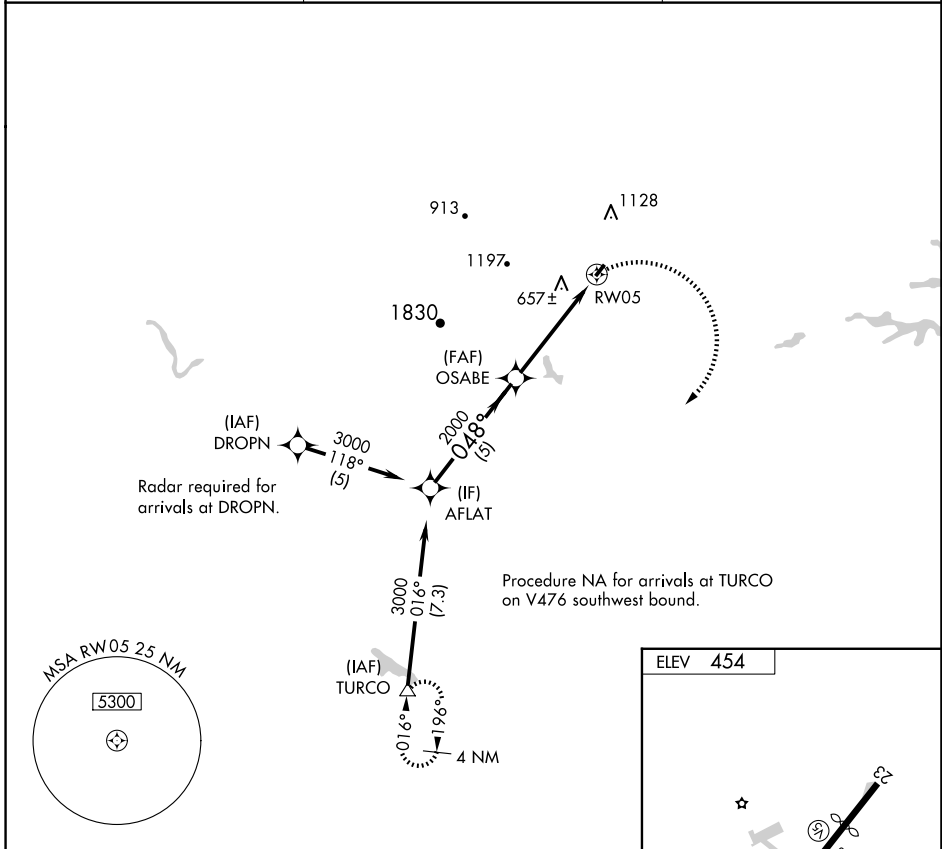
# RNAV (GPS)-A

GORDONSVILLE MUNI (GVE)

**▼** When local altimeter setting not received, use Orange County altimeter setting and increase all MDA 20 ft. DME/DME RNP-0.3 NA. Procedure NA at night.  
**▲ NA** Helicopter visibility reduction below 1 SM NA.

**MISSED APPROACH:** Climbing right turn to 3300 direct TURCO and hold.

AWOS-3 <b>120.225</b>	POTOMAC APP CON <b>132.85 323.125</b>	UNICOM <b>123.0 (CTAF) 0</b>
--------------------------	--	---------------------------------



NE-3, 23 JAN 2025 to 20 FEB 2025

NE-3, 23 JAN 2025 to 20 FEB 2025

AFLAT		Visual Segment - Obstacles.		3300	TURCO
3000	048°	OSABE	2000	RW05	
5 NM		4.7 NM			
CATEGORY	A	B	C	D	
<b>C</b> CIRCLING	1520-3	1066 (1100-3)	NA		

