

# RNAV (GPS)-A

APCH CRS <b>211°</b>	Rwy Idg TDZE Arpt Elev	<b>N/A</b> <b>N/A</b> <b>933</b>
-------------------------	------------------------------	----------------------------------------

[USAF]

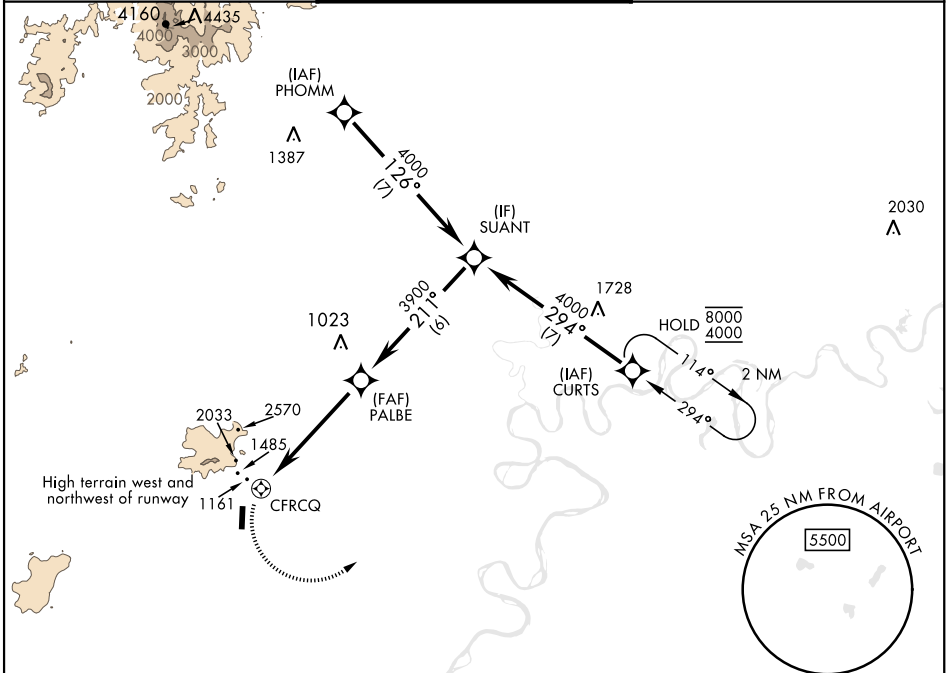
TATALINA LRSS (PATL)

RNP APCH - GPS

▼ \* Circling NA to Rwy 17. Circling to Rwy 35 NA W of Rwy 17-35. Night Operations not authorized.

MISSED APPROACH: Climbing left turn to 4000 direct CURTS and hold.

KENAI RADIO <b>122.3</b>	UNICOM <b>126.2 (CTAF) 364.2</b>	AWOS-3
-----------------------------	-------------------------------------	--------



AK, 26 DEC 2024 to 20 FEB 2025

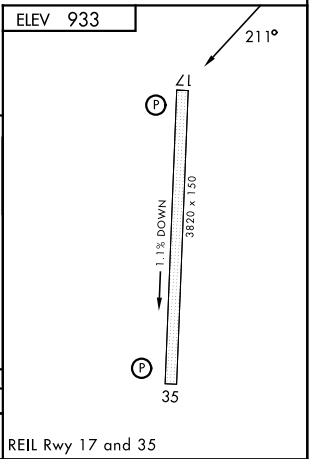
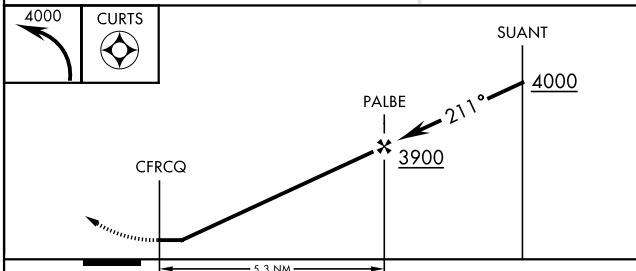
AK, 26 DEC 2024 to 20 FEB 2025

Uncontrolled Airspace below 1200' AGL within 4 NM of Tatalina airport

**NOT FOR CIVIL USE**

**MILITARY CERTIFIED AIRCREWS OR AUTHORIZED CONTRACT AIRCRAFT ONLY**

EMERG SAFE ALT 100 NM 12,000



CATEGORY	A	B	C	D
CIRCLING*	1900-1¼ 967 (1000-1¼)	2440-1½ 1507 (1600-1½)	2920-3 1987 (2000-3)	NA

REIL Rwy 17 and 35

# RNAV (GPS)-A