

APP CRS	Rwy Idg	<b>5000</b>
<b>191°</b>	TDZE	<b>54</b>
	Apt Elev	<b>65</b>

# RNAV (GPS) RWY 19

INVERNESS (INF')

RNP APCH.

**⚠** **⚠** Rwy 19 helicopter visibility reduction below 1 SM NA.

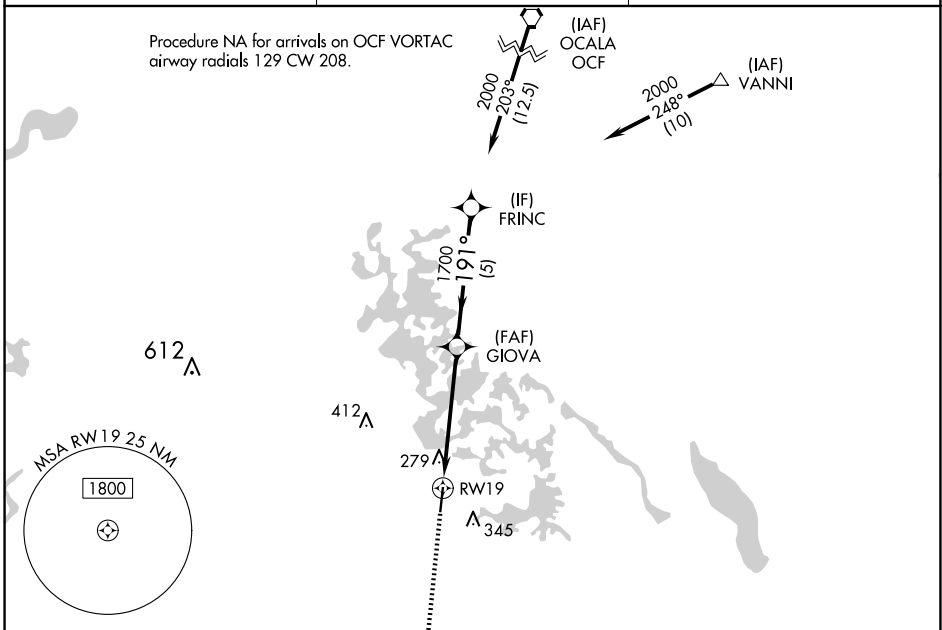
**MISSED APPROACH:** Climb to 2000 direct BOWSK and on track 176° to REBEC and hold.

AWOS-3  
**119.975**

JACKSONVILLE APP CON  
**118.6 251.15**

UNICOM  
**122.725 (CTAF) 0**

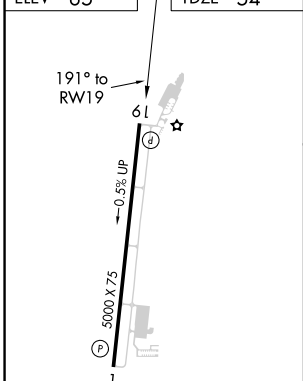
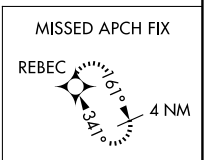
Procedure NA for arrivals on OCF VORTAC  
airway radials 129 CW 208.



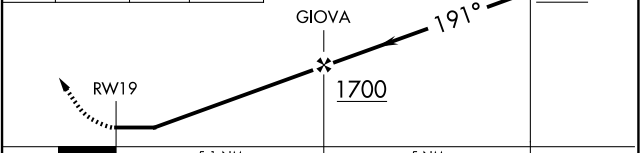
SE-3, 23 JAN 2025 to 20 FEB 2025

SE-3, 23 JAN 2025 to 20 FEB 2025

ELEV 65	TDZE 54
---------	---------



2000	BOWSK	REBEC	Visual Segment - Obstacles.	FRINC
↑	◆	◆ 176°		◆



CATEGORY	A	B	C	D
LNAV MDA	580-1	526 (600-1)	580-1½ 526 (600-1½)	NA
CIRCLING	660-1	595 (600-1)	660-1½ 595 (600-1½)	NA

MIRL Rwy 1-19  
REIL Rwy 1 and 19