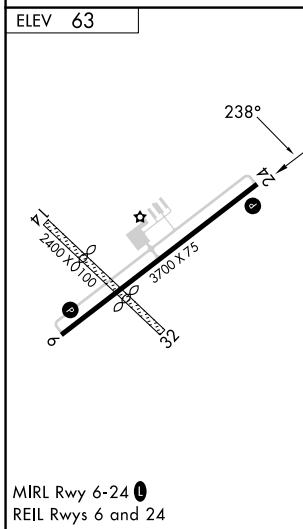
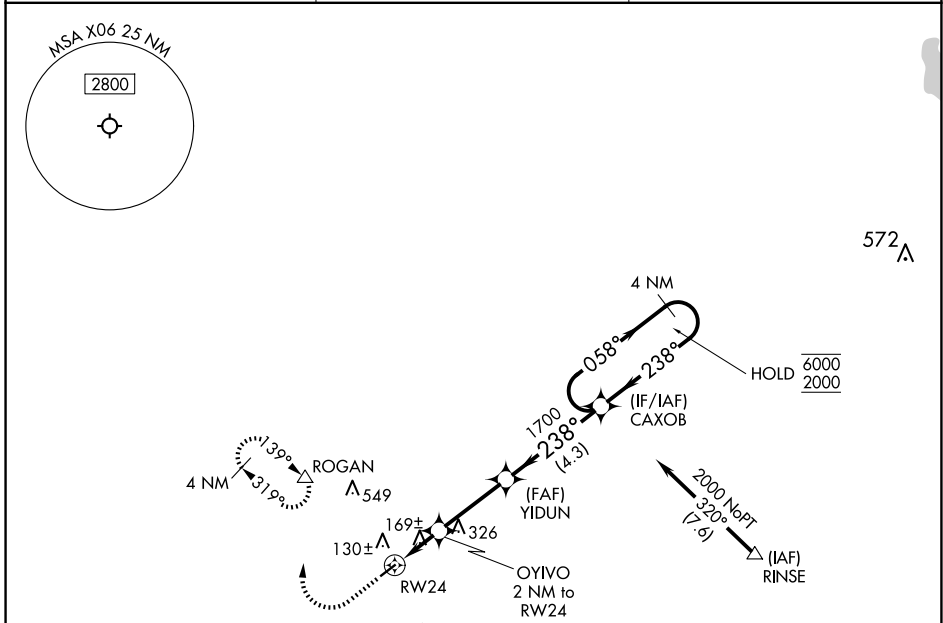


APP CRS	Rwy Idg	N/A
238°	TDZE	N/A
	Apt Elev	63

# RNAV (GPS)-B

ARCADIA MUNI (X06)

RNP APCH - GPS.		MISSED APPROACH: Climb to 1400 then climbing right turn to 2000 direct ROGAN and hold.
PGD ASOS <b>135.675</b>	MIAMI CENTER <b>134.55 257.7</b>	
		UNICOM <b>123.0 (CTAF)</b>



ELEV 63	1400	2000	ROGAN	VGSI and descent angle not coincident (VGSI Angle 3.00/TCH 50).	4 NM Holding Pattern
	↑	↷	△		
			YIDUN		
			OYIVO 2 NM to RW24	≤3.00° TCH 40	
			RW24	740	
			2 NM	3 NM	4.3 NM
			1700	238°	058°
				238°	6000
					2000
MIRL Rwy 6-24					
REIL Rwy 6 and 24					
CATEGORY	A	B	C	D	
CIRCLING	560-1 497 (500-1)	700-1 637 (700-1)	NA		

SE-3, 23 JAN 2025 to 20 FEB 2025

SE-3, 23 JAN 2025 to 20 FEB 2025