

APP CRS	Rwy Idg	4200
126°	TDZE	2249
	Apt Elev	2249

RNAV (GPS) RWY 13

DUNN COUNTY WEYDAHL FLD (9Y1)

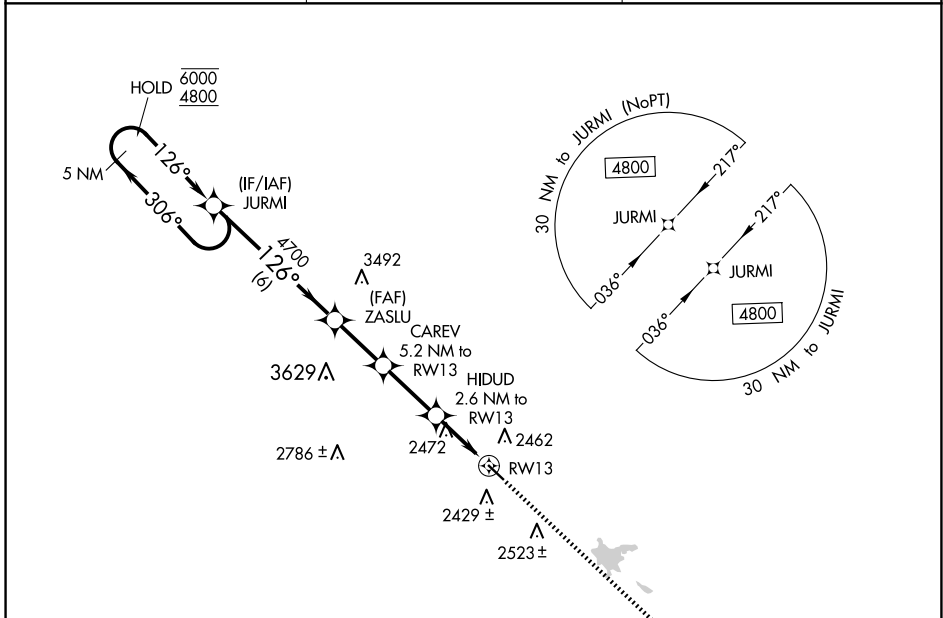
RNP APCH.

▽ Use Watford City altimeter setting, when not received, use Dickinson altimeter setting; increase all MDA's 40 feet and Cat C visibility 1/8 SM. Increase Circling visibility Cat C 1/4 SM.

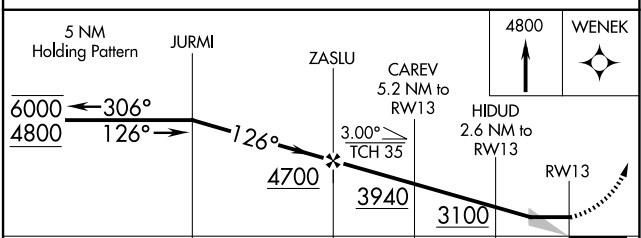
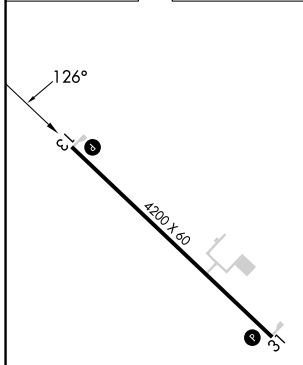
▲ NA

MISSED APPROACH: Climb to 4800 direct WENEK and hold.

AWOS-3PT 118.525	MINNEAPOLIS CENTER 124.25 236.825	CTAF 122.90
----------------------------	---	-----------------------



ELEV 2249	TDZE 2249
-----------	-----------



CATEGORY	A	B	C	D
LNNAV MDA	2820-1	571 (600-1)	2820-1½ 571 (600-1½)	NA
C CIRCLING	2880-1 631 (700-1)	2900-1 651 (700-1)	2960-2 711 (800-2)	NA

MIRL Rwy 13-31 **Ⓛ**

NC-1, 23 JAN 2025 to 20 FEB 2025

NC-1, 23 JAN 2025 to 20 FEB 2025