

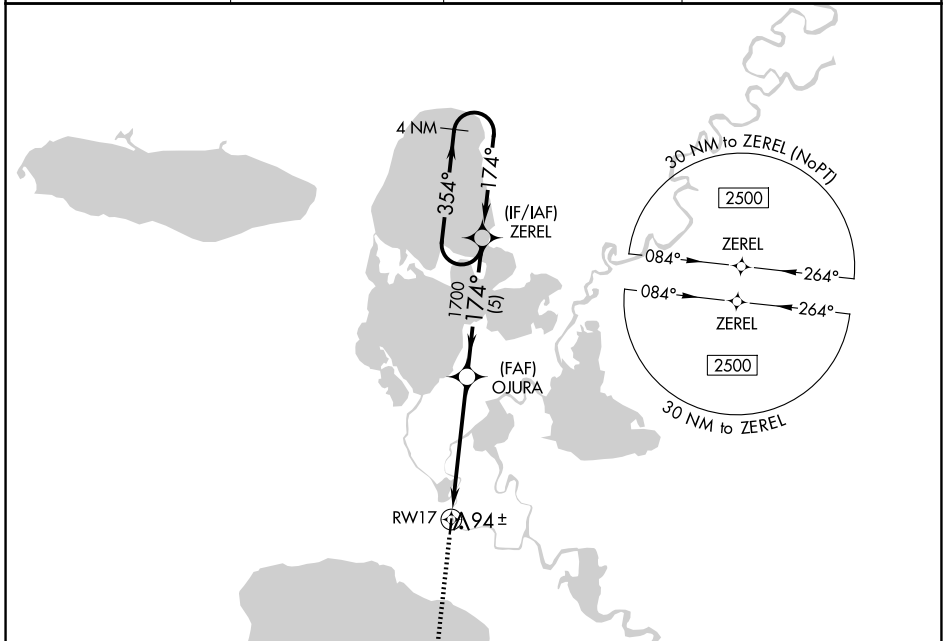
APP CRS	Rwy Idg	3000
174°	TDZE	48
	Apt Elev	48

RNAV (GPS) RWY 17

KASIGLUK (Z09) (PFKA)

 NA	DME/DME RNP-0.3 NA. Use Nunapitchuk altimeter setting, when not received, use Bethel altimeter setting.	MISSED APPROACH: Climb to 2600 direct UNAWO and hold.
------------	---	---

16A/PPT AWOS-3P 121.55	BET/PABE ASOS 135.45	ANCHORAGE CENTER 125.2 372.0	CTAF 122.9
----------------------------------	--------------------------------	--	----------------------



AK, 26 DEC 2024 to 20 FEB 2025

AK, 26 DEC 2024 to 20 FEB 2025

ELEV 48	TDZE 48
MIRL Rwy 17-35	

MISSED APCH FIX UNAWO	
2600 ↑ UNAWO	ZEREL 4 NM Holding Pattern 354° → 2500 ← 174°
RWY 17 3.00° TCH 40	OJURA 1700
5.1 NM 5 NM	
CATEGORY	A B C D
LNAV MDA	640-1 592 (600-1) NA
CIRCLING	720-1 672 (700-1) NA