

# RNAV (GPS) RWY 35

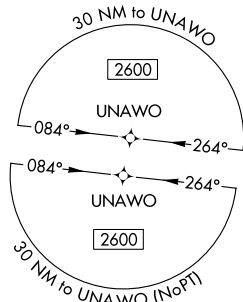
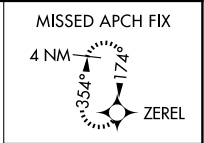
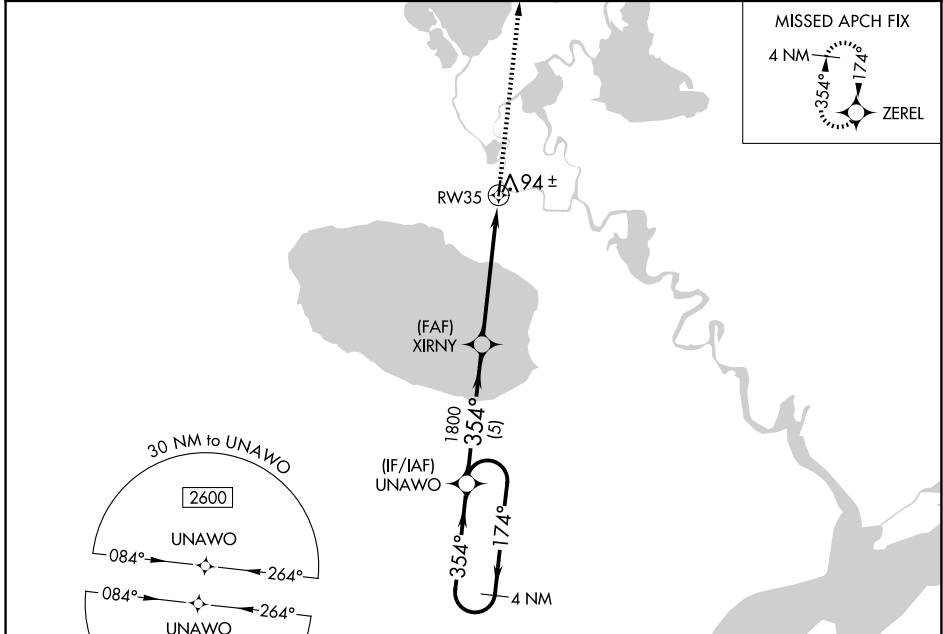
KASIGLUK (Z09) (PFKA)

APP CRS <b>354°</b>	Rwy Idg <b>3000</b>
	TDZE <b>48</b>
	Apt Elev <b>48</b>

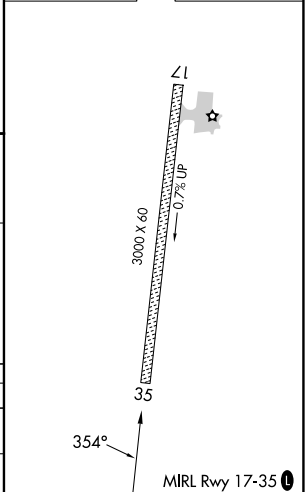
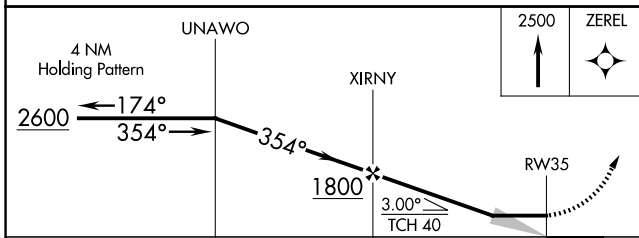
**NA** DME/DME RNP-0.3 NA. Use Nunapitchuk altimeter setting, when not received, use Bethel altimeter setting.

MISSED APPROACH: Climb to 2500 direct ZEREL and hold.

16A/PPIT AWOS-3P <b>121.55</b>	BET/PABE ASOS <b>135.45</b>	ANCHORAGE CENTER <b>125.2 372.0</b>	CTAF <b>122.9</b>
-----------------------------------	--------------------------------	--	----------------------



ELEV <b>48</b>	TDZE <b>48</b>
----------------	----------------



CATEGORY	A	B	C	D
LNAV MDA	680-1	632 (700-1)		NA
CIRCLING	720-1	672 (700-1)		NA

AK, 26 DEC 2024 to 20 FEB 2025

AK, 26 DEC 2024 to 20 FEB 2025