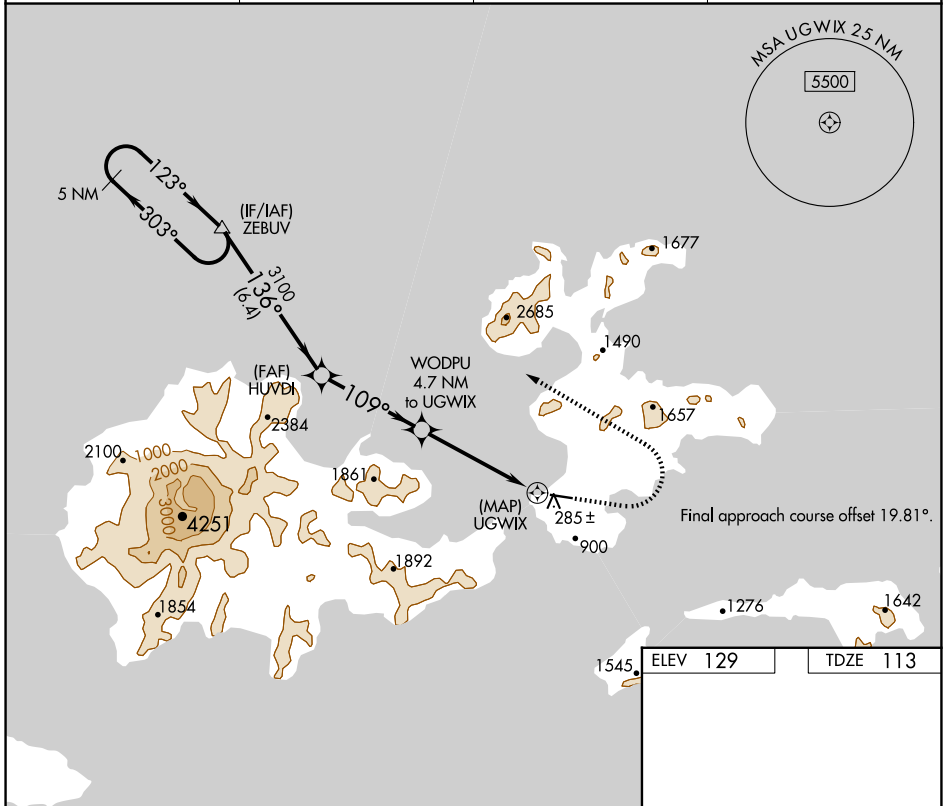


APP CRS	Rwy Idg	<b>4500</b>
<b>109°</b>	TDZE	<b>113</b>
	Apt Elev	<b>129</b>

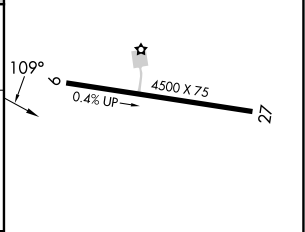
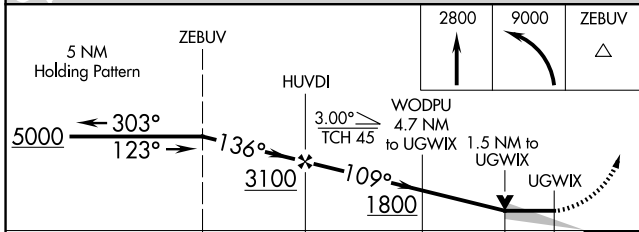
# RNAV (GPS) RWY 9

AKUTAN (7AK)(PAUT)

	DME/DME RNP-0.3 NA. Procedure NA at night.	MISSED APPROACH: Climb to 2800 then climbing left turn to 9000 direct ZEBUV and hold, continue climb-in-hold to 9000.	
	AWOS-3P <b>129.05</b>	ANCHORAGE CENTER <b>121.4</b>	GCO <b>130.3</b>



ELEV 129	TDZE 113
----------	----------



CATEGORY	A	B	C	D
LNVA MDA	780-1 667 (700-1)	780-1 667 (700-1)	780-1 667 (700-1)	780-1 667 (700-1)
CIRCLING	1020-1 1/4 891 (900-1 1/4)	1200-1 1/2 1071 (1100-1 1/2)	1600-3 1471 (1500-3)	1960-3 1831 (1900-3)

MIRL Rwy 9-27

AK, 26 DEC 2024 to 20 FEB 2025

AK, 26 DEC 2024 to 20 FEB 2025