

# COPTER RNAV (GPS) RWY 24

APCH CRS	Rwy Idg	<b>6668</b>
<b>244°</b>	TDZE	<b>16</b>
	Arprt Elev	<b>16</b>

[USA]

BUCHOLZ AAF (PKWA)

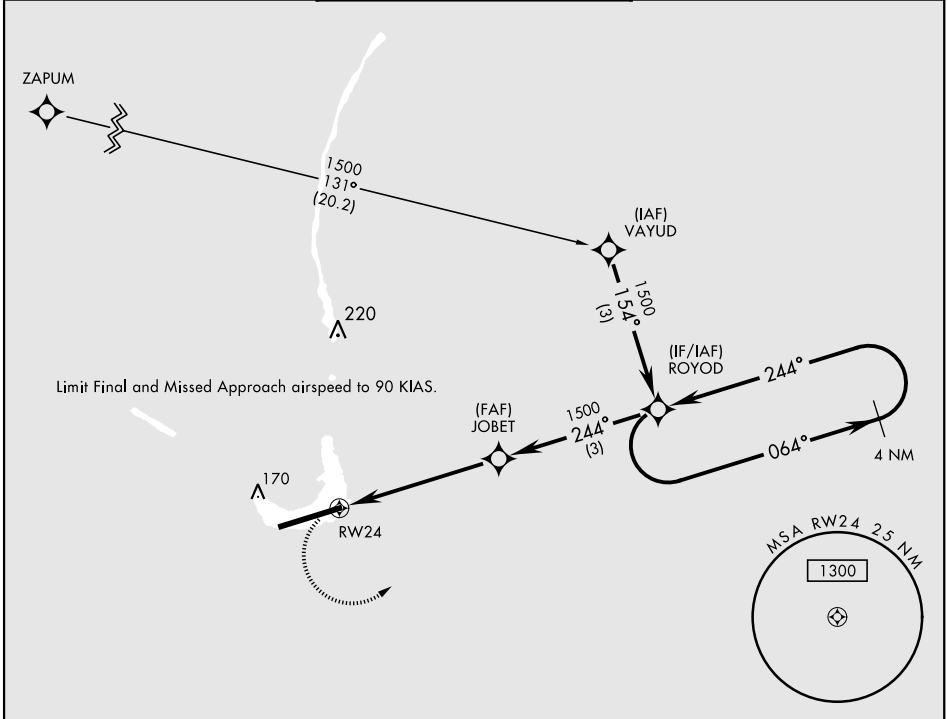
**▼** When control tower closed, obtain local altimeter setting from Base Ops on 118.8.  
DME/DME RNP-0.3 NA

**MISSED APPROACH:** Climbing left turn to 1500 direct ROYOD and hold.

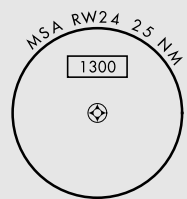
AWOS  
**119.675**

TOWER ★  
**126.2 360.2**

GND CON  
**121.9**

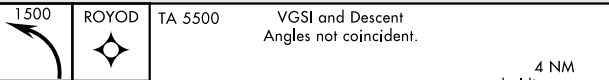


Limit Final and Missed Approach airspeed to 90 KIAS.

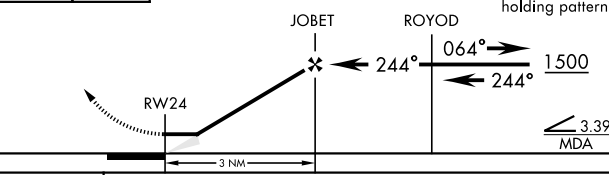
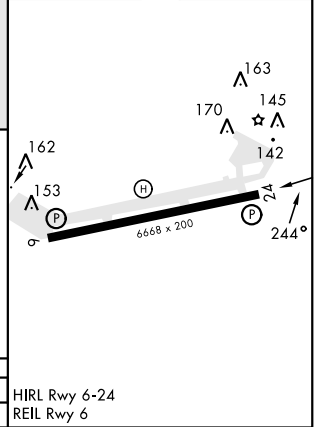


PAC, 26 DEC 2024 to 20 FEB 2025

PAC, 26 DEC 2024 to 20 FEB 2025



ELEV	16	TDZE	16
------	----	------	----



CATEGORY	COPTER			HIRL Rwy 6-24
LNNAV MDA	440-1/2	424	(500-1/2)	REL Rwy 6

# COPTER RNAV (GPS) RWY 24