

KWAJALEIN USAKA, MARSHALL I

COPTER RNAV (GPS) RWY 6

APCH CRS	Rwy Idg	6668
064°	TDZE	16
	Arpt Elev	16

[USA]

BUCHOLZ AAF (PKWA)

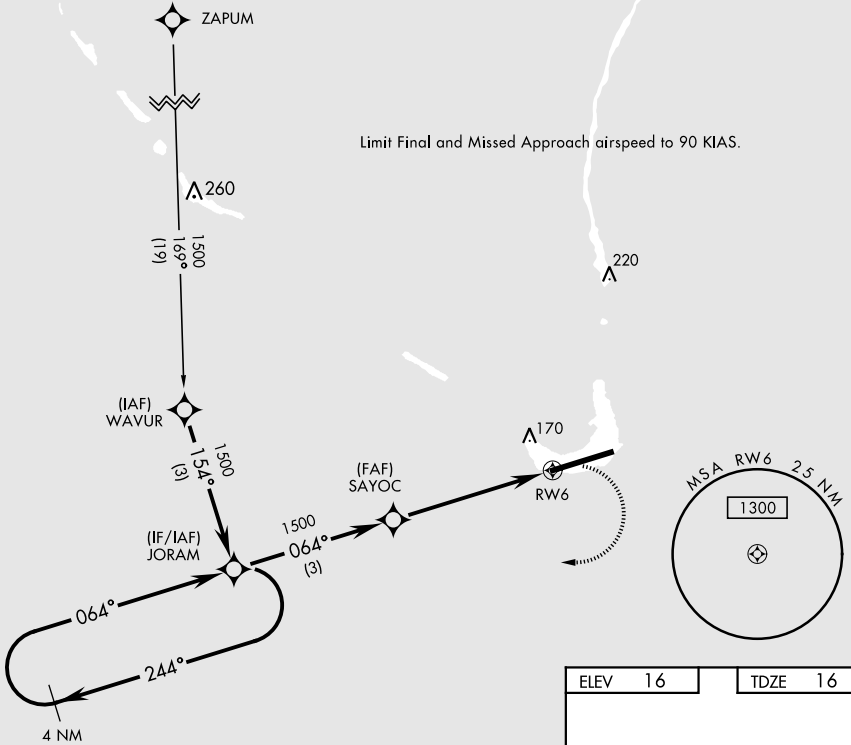
▼ When control tower closed, obtain local altimeter setting from Base Ops on 118.8.
DME/DME RNP-0.3 NA

MISSED APPROACH: Climbing right turn to 1500 direct JORAM and hold.

AWOS
119.675

TOWER ★
126.2 360.2

GND CON
121.9

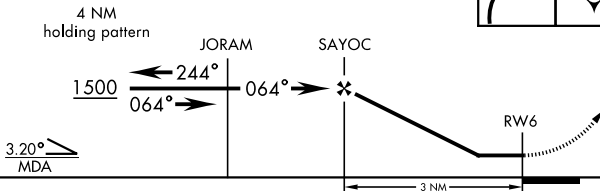
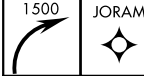


PAC, 26 DEC 2024 to 20 FEB 2025

PAC, 26 DEC 2024 to 20 FEB 2025

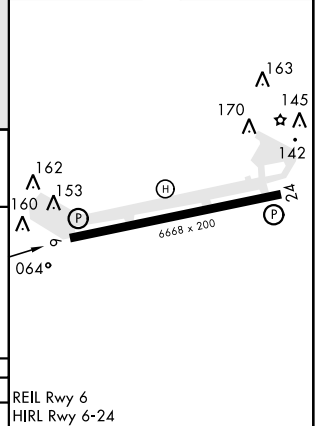
VGSI and Descent Angles not coincident.

TA 5500



3.20° MDA

ELEV	16	TDZE	16
------	----	------	----



KWAJALEIN USAKA, MARSHALL I

08° 43' N-167° 44' E

BUCHOLZ AAF (PKWA)

Amdt 1 05JAN17

COPTER RNAV (GPS) RWY 6