

KWAJALEIN USAKA, MARSHALL I

RNAV (GPS) RWY 6

APCH CRS	Rwy Idg	6668
064°	TDZE	16
	Arprt Elev	16

[USA]

BUCHOLZ AAF (PKWA)

▼ When control tower closed, obtain local altimeter setting from Base Ops on 118.8. DME/DME RNP-0.3 NA.

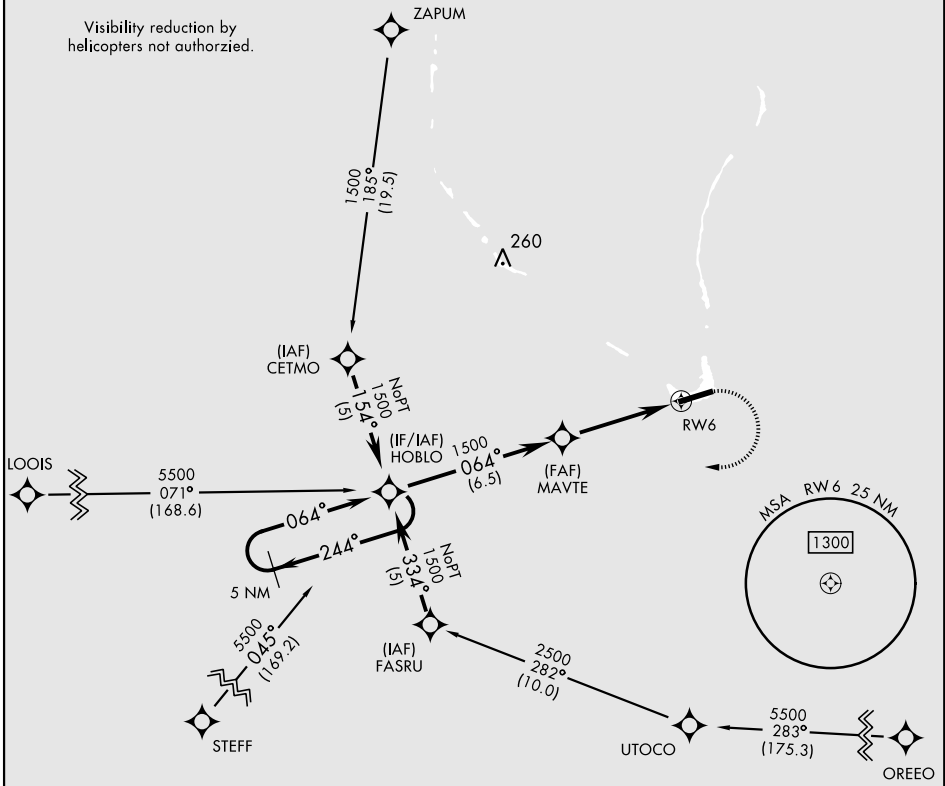
MISSED APPROACH: Climbing right turn to 1500 direct HOBLO and hold

AWOS
119.675

TOWER ★
126.2 360.2

GND CON
121.9

Visibility reduction by helicopters not authorized.



PAC, 26 DEC 2024 to 20 FEB 2025

PAC, 26 DEC 2024 to 20 FEB 2025

5 NM Holding Pattern		TA 5500	1500	HOBLO	ELEV 16	TDZE 16
CATEGORY	A	B	C	D		
RNAV MDA	480-1 464 (500-1)		480-1¼ 464 (500-1¼)	480-1½ 464 (500-1½)		
CIRCLING	500-1 484 (500-1)		500-1½ 484 (500-1½)	580-2 564 (600-2)	HIRL Rwy 6-24 REIL Rwy 6	

KWAJALEIN USAKA, MARSHALL I

08° 43' N-167° 44' E

BUCHOLZ AAF (PKWA)

Amdt 2 02DEC21

RNAV (GPS) RWY 6