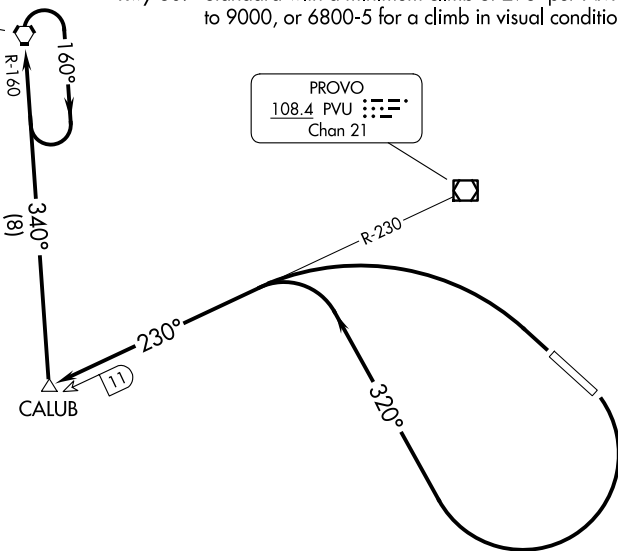
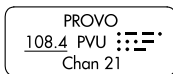
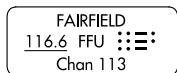


SALT LAKE CITY DEP CON
 118.85 233.7
 CTAF
 122.9

TAKEOFF MINIMUMS

Rwy 12: Standard with a minimum climb of 455' per NM to 7100, or 6800-5 for climb in visual conditions.

Rwy 30: Standard with a minimum climb of 298' per NM to 9000, or 6800-5 for a climb in visual conditions.



NOTE: Chart not to scale.

(CONTINUED ON FOLLOWING PAGE)

DEPARTURE ROUTE DESCRIPTION

TAKEOFF RUNWAY 12: Climbing right turn to 11 500 on heading 320° and PVU VOR/DME R-230 to CALUB INT/PVU 11 DME, do not exceed 240K until CALUB INT/PVU 11 DME, thence

TAKEOFF RUNWAY 30: Climbing left turn to 11 500 to intercept PVU VOR/DME R-230 to CALUB INT/PVU 11 DME, thence

. . . . Climbing right turn on FFU R-160 to FFU VORTAC and hold, continue climb-in-hold to cross FFU VORTAC at MCA/MEA for route of flight.

VCOA RUNWAYS 12, 30: Obtain ATC approval for VCOA when requesting IFR clearance. Climb in visual conditions to cross Spanish Fork Muni/Woodhouse Fld at or above 11 200 before proceeding on course.

SPANISH FORK ONE DEPARTURE (OBSTACLE)

TAKEOFF OBSTACLE NOTES

- Rwy 12: Lighting 10' from DER, 29' left of centerline, 2' AGL/4530' MSL.
 - Fence 60' from DER, 481' right of centerline, 4535' MSL.
 - Building 198' from DER, 449' right of centerline, 12' AGL/4541' MSL.
 - Sign, building beginning 297' from DER, 461' right of centerline, up to 4552' MSL.
 - Building 1023' from DER, 600' right of centerline, 4555' MSL.
 - Tree 1031' from DER, 651' left of centerline, 4563' MSL.
 - Tree, building beginning 1140' from DER, 503' left of centerline, up to 4565' MSL.
 - Building 1173' from DER, 560' right of centerline, 4559' MSL.
 - Building 1434' from DER, 855' right of centerline, 4572' MSL.
 - Tree 1514' from DER, 742' left of centerline, 4568' MSL.
 - Pole 1818' from DER, 352' right of centerline, 4576' MSL.
 - Pole beginning 3232' from DER, 1134' right of centerline, up to 4621' MSL.
 - Pole, sign beginning 3499' from DER, 801' left of centerline, up to 106' AGL/4673' MSL.
 - Electrical system 3922' from DER, 628' right of centerline, 4637' MSL.
 - Pole 4450' from DER, 893' right of centerline, 4649' MSL.
 - Pole 4709' from DER, 1365' right of centerline, 4662' MSL.
 - Pole 5162' from DER, 1194' right of centerline, 4664' MSL.
 - Pole 2 NM from DER, 3639' left of centerline, 4853' MSL.
- Rwy 30: Lighting 9' from DER, 29' right of centerline, 2' AGL/4525' MSL.
 - Vegetation 36' from DER, 145' right of centerline, 9' AGL/4527' MSL.
 - Tree 750' from DER, 557' left of centerline, 4546' MSL.
 - Pole 1182' from DER, 595' left of centerline, 50' AGL/4570' MSL.
 - Pole beginning 1479' from DER, 268' left of centerline, up to 60' AGL/4579' MSL.
 - Tree 1505' from DER, 550' right of centerline, 49' AGL/4565' MSL.

SW-4, 23 JAN 2025 to 20 FEB 2025

SW-4, 23 JAN 2025 to 20 FEB 2025