

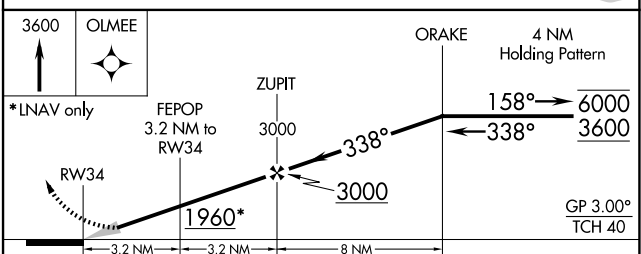
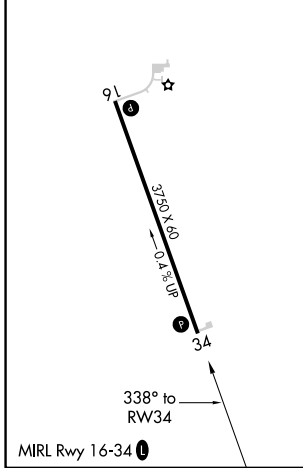
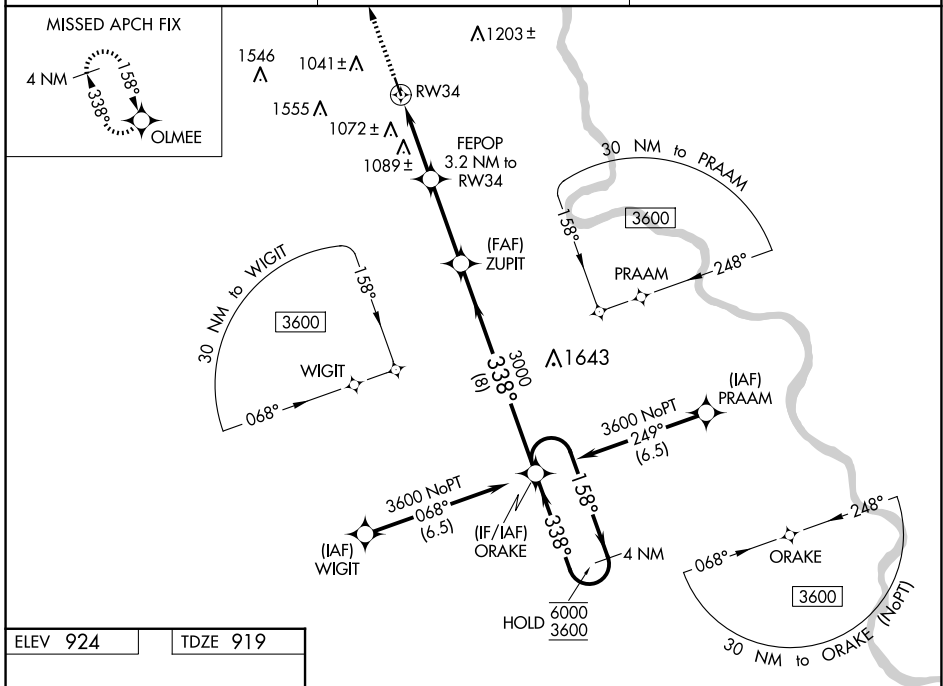
WAAS CH 42842 W34A	APP CRS 338°	Rwy Idg TDZE Apt Elev	3750 919 924
--	------------------------	-----------------------------	---

RNAV (GPS) RWY 34

FARINGTON FLD (K01)

RNP APCH.	MISSED APPROACH: Climb to 3600 direct OLMEE and hold.
<p>⚠ Circling NA for Cat C west of Rwy 16-34. Baro-VNAV NA. Use Brenner Fld altimeter setting.</p>	

FNB ASOS 119.275	MINNEAPOLIS CENTER 128.75 346.3	CTAF 122.9
----------------------------	---	----------------------



CATEGORY	A	B	C	D
LPV DA	1175-1 256 (300-1)			NA
LNAV/VNAV DA	1302-1 3/8 383 (400-1 1/8)			NA
LNAV MDA	1400-1 481 (500-1)	1400-1 3/8 481 (500-1 3/8)		NA
<input checked="" type="checkbox"/> CIRCLING	1480-1 556 (600-1)	1540-1 3/4 616 (700-1 3/4)		NA

NC-2, 23 JAN 2025 to 20 FEB 2025

NC-2, 23 JAN 2025 to 20 FEB 2025