

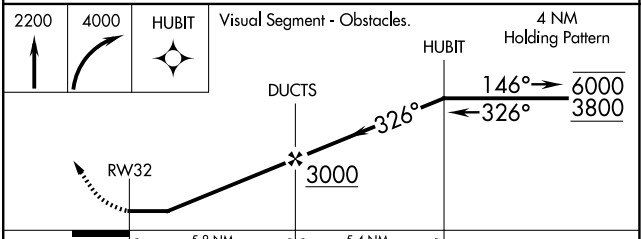
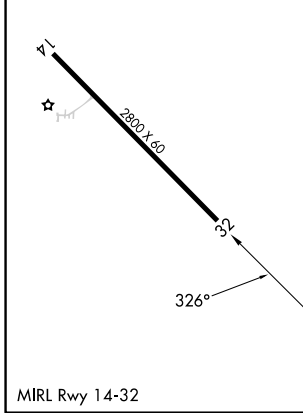
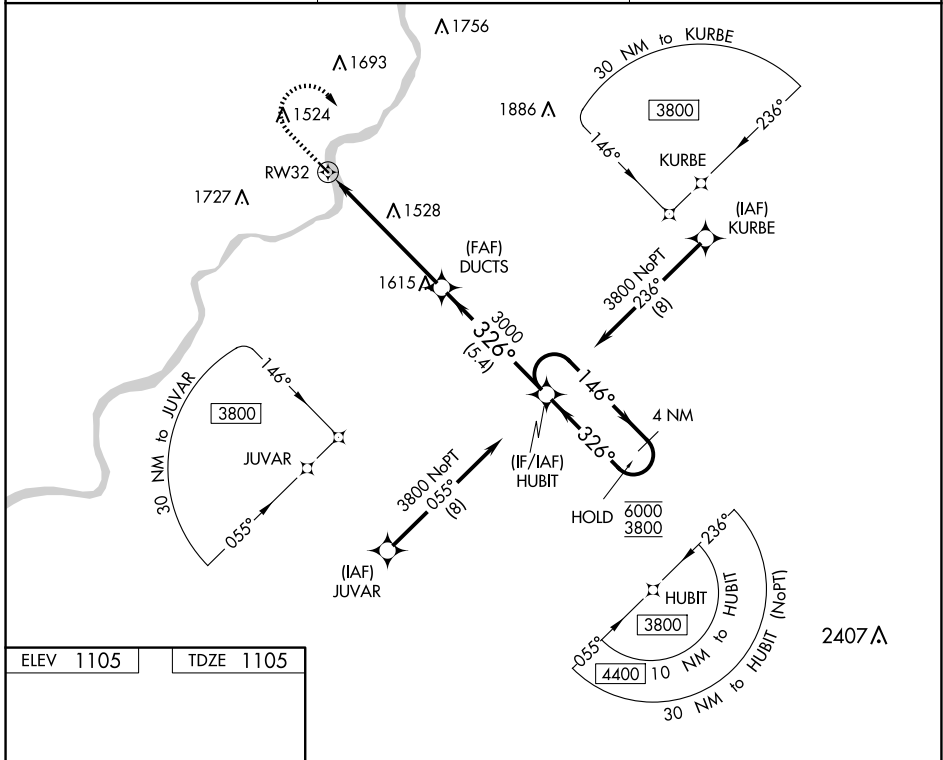
WAAS CH <b>50143</b> <b>W32A</b>	APP CRS <b>326°</b>	Rwy ldg TDZE Apt Elev	<b>2800</b> <b>1105</b> <b>1105</b>
--	------------------------	-----------------------------	---

# RNAV (GPS) RWY 32

MCVILLE (6P7)

RNP APCH.	Procedure NA at night. Rwy 32 helicopter visibility reduction below 1 SM NA. Use Pittsburgh/Butler Rgnl altimeter setting.	MISSED APPROACH: Climb to 2200 then climbing right turn to 4000 direct HUBIT and hold.
-----------	--	--

BTP AWOS-3PT <b>121.45</b>	JOHNSTOWN APP CON ★ <b>121.2</b>	UNICOM <b>123.0</b> (CTAF)
-------------------------------	-------------------------------------	-------------------------------



CATEGORY	A	B	C	D
LP MDA	1840-1	735 (800-1)		NA
LNAV MDA	1840-1	735 (800-1)		NA
<input checked="" type="checkbox"/> CIRCLING	1860-1 755 (800-1)	1880-1 775 (800-1)		NA

NE-4, 23 JAN 2025 to 20 FEB 2025

NE-4, 23 JAN 2025 to 20 FEB 2025