

APP CRS	Rwy Idg	5002
140°	TDZE	298
	Apt Elev	301

RNAV (GPS) RWY 14

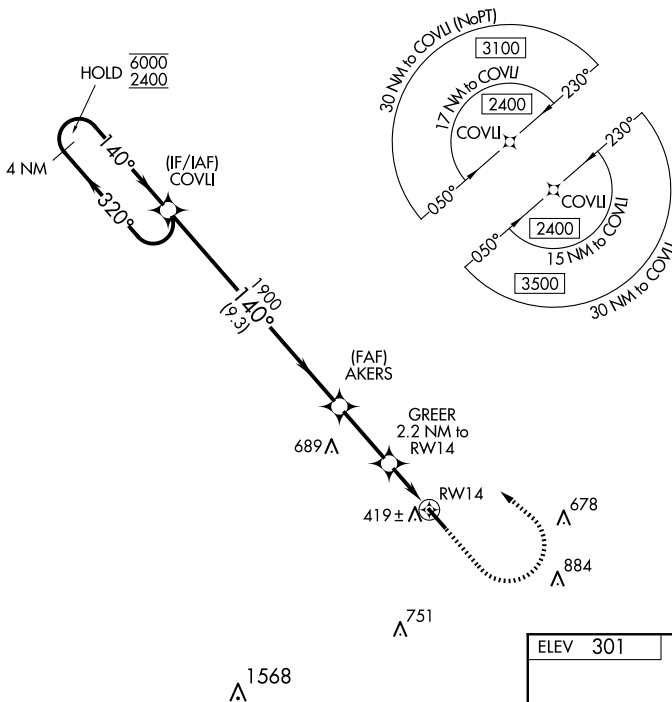
FRANKLIN FLD (Ø7A)

RNP APCH - GPS.

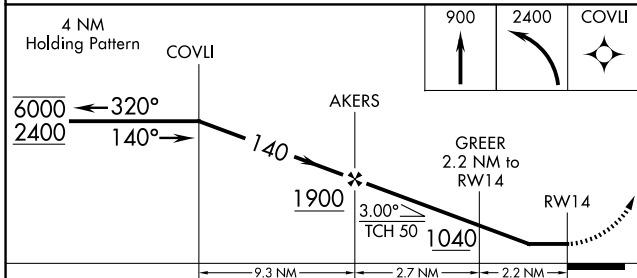
⚠ Rwy 14 helicopter visibility reduction below 1 SM NA.
⚠ Procedure NA at night. Use Troy altimeter setting.

MISSED APPROACH: Climb to 900 then climbing left turn to 2400 direct COVLI and hold.

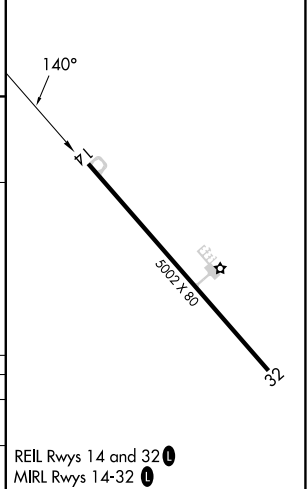
TOI ASOS 120.925	MONTGOMERY APP CON * 121.2 269.05	UNICOM 122.8 (CTAF) Ø
----------------------------	---	---------------------------------



ELEV	301	TDZE	298
------	-----	------	-----



CATEGORY	A	B	C	D
LNVA MDA	740-1	442 (500-1)	740-1 $\frac{3}{8}$	442 (500-1 $\frac{3}{8}$)
CIRCLING	840-1	539 (600-1)	900-1 $\frac{1}{2}$ 599 (600-1 $\frac{1}{2}$)	1060-2 $\frac{1}{2}$ 759 (800-2 $\frac{1}{2}$)



REIL Rwy 14 and 32 Ø
 MIRL Rwy 14-32 Ø

SE-4, 23 JAN 2025 to 20 FEB 2025

SE-4, 23 JAN 2025 to 20 FEB 2025