

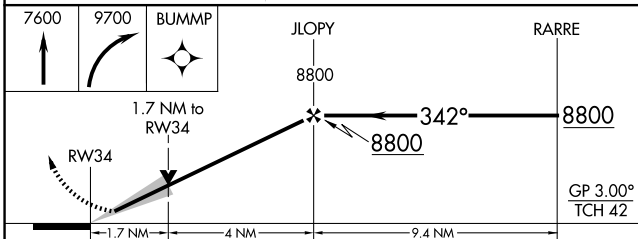
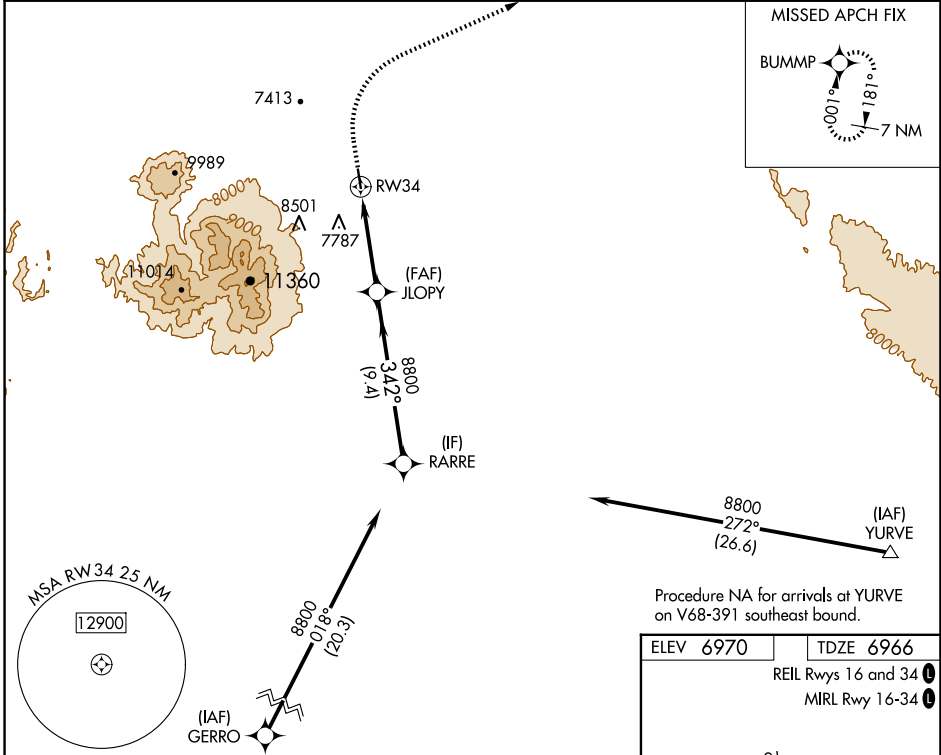
WAAS CH 45546 W34A	APP CRS 342°	Rwy Idg TDZE Apt Elev	5998 6966 6970
--	------------------------	-----------------------------	---

RNAV (GPS) RWY 34

MONTICELLO (U64)

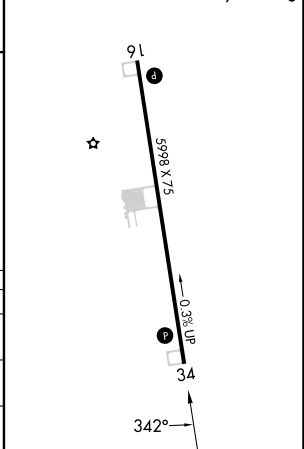
RNP APCH - GPS.	MISSED APPROACH: Climb to 7600 then climbing right turn to 9700 direct BUMMP and hold.
▼ For uncompensated Baro-VNAV systems, LNAV/VNAV NA below -28°C or above 54°C.	

AWOS-3PT 121.025	DENVER CENTER 127.55 256.875	UNICOM 122.8 (CTAF) 0
----------------------------	--	---------------------------------



CATEGORY	A	B	C	D
LPV DA	7166-1	200 (200-1)		NA
LNAV/VNAV DA	7580-1¾	614 (700-1¾)		NA
LNAV MDA	7540-1	574 (600-1)		NA

ELEV 6970	TDZE 6966
REIL Rwys 16 and 34	
MIRL Rwy 16-34	



SW-4, 23 JAN 2025 to 20 FEB 2025

SW-4, 23 JAN 2025 to 20 FEB 2025