

WAAS CH 42944 W31A	APP CRS 310°	Rwy Idg TDZE 1247 Apt Elev 1255	4206
--	------------------------	---	-------------

RNAV (GPS) RWY 31

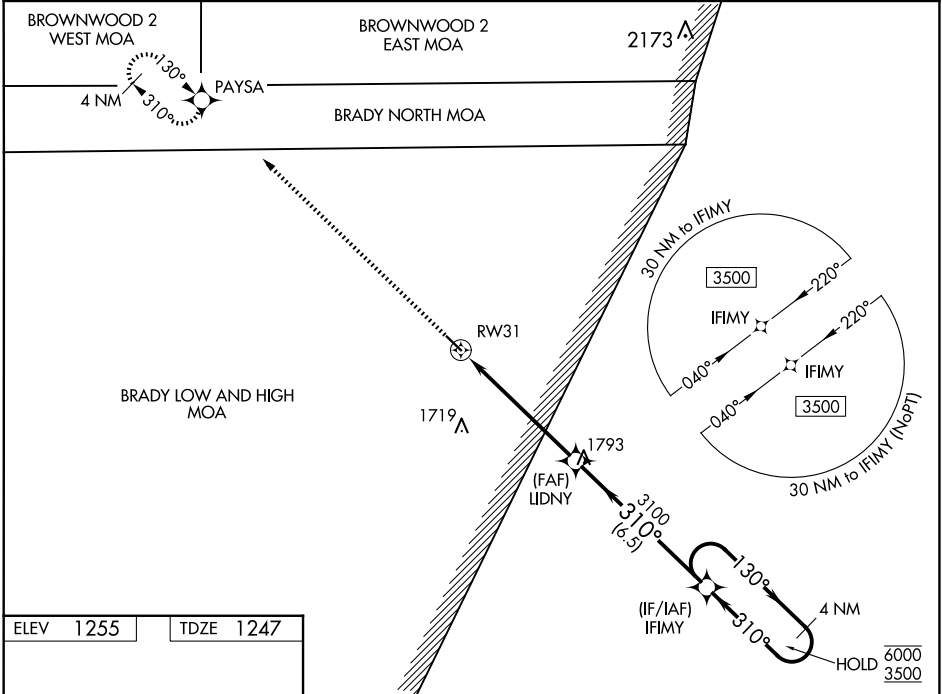
SAN SABA COUNTY MUNI (81R)

RNP APCH - GPS.

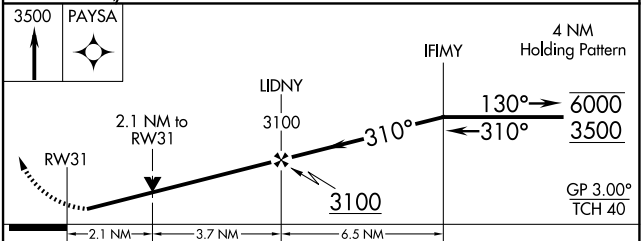
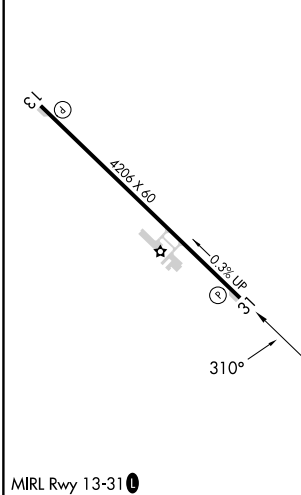
⚠ Rwy 31 helicopter visibility reduction below $\frac{3}{4}$ SM NA. For uncompensated Baro-VNAV systems, LNAV/VNAV NA below -17°C or above 54°C.

MISSED APPROACH: Climb to 3500 direct PAYSA and hold.

AWOS-3P 120.525	HOUSTON CENTER 132.35 317.5	UNICOM 122.8 (CTAF) 0
---------------------------	---------------------------------------	---------------------------------



ELEV 1255	TDZE 1247
-----------	-----------



CATEGORY	A	B	C	D
LPV DA	1497-1	250 (300-1)		NA
LNAV/VNAV DA	1497-1	250 (300-1)		NA
LNAV MDA	1940-1	693 (700-1)		NA
CIRCLING	1940-1	685 (700-1)		NA

SC-3, 23 JAN 2025 to 20 FEB 2025

SC-3, 23 JAN 2025 to 20 FEB 2025