

LOC/DME I-EMB <b>109.75</b> Chan <b>34 (Y)</b>	APP CRS <b>175°</b>	Rwy ldg TDZE Apt Elev <b>7202</b> <b>1771</b> <b>1791</b>
--	------------------------	--

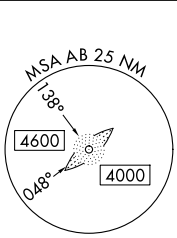
# LOC RWY 17R

ABILENE RGNL (ABI)

ADF required for missed approach.

MISSED APPROACH: Climb to 2800 then climbing left turn to 4000 direct TOMHI LOM and hold.

ATIS <b>118.25</b>	ABILENE APP CON <b>125.0 338.3 (EAST)</b> <b>127.2 282.3 (WEST)</b>	ABILENE TOWER <b>120.1 257.8</b>	GND CON <b>121.7 348.6</b>
-----------------------	---	-------------------------------------	-------------------------------



Procedure NA for arrival on ABI VORTAC  
airway radials 037 CW 099.

ABILENE  
113.7 ABI Chan 84

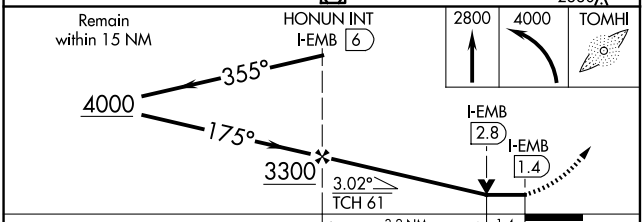
ALTERNATE MISSED APCH FIX ABILENE  
113.7 ABI Chan 84

R-285 105° 285°

2917

Procedure NA for arrival on TQA VOR/DME airway radial 082.

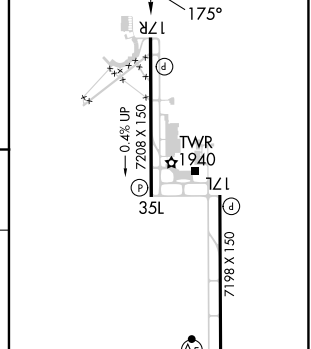
TUSCOLA  
111.6 TQA Chan 53



LOCALIZER 109.75  
I-EMB Chan 34(Y)

LOM TOMHI  
353 AB

ELEV 1791	<b>D</b> TDZE 1771
-----------	--------------------



CATEGORY	A	B	C	D	E	
S-LOC 17R	2280-1	509 (500-1)	2280-1 <sup>3</sup> / <sub>8</sub>	509 (500-1 <sup>3</sup> / <sub>8</sub> )		
<b>C</b> CIRCLING	2300-1 509 (600-1)	2320-1 529 (600-1)	2420-1 <sup>3</sup> / <sub>4</sub> 629 (700-1 <sup>3</sup> / <sub>4</sub> )	2460-2 669 (700-2)	2620-3 829 (900-3)	
	FAF to MAP 4.6 NM					
	Knots	60	90	120	150	180
	Min:Sec	4:36	3:04	2:18	1:50	1:32

SC-2, 20 FEB 2025 to 20 MAR 2025

SC-2, 20 FEB 2025 to 20 MAR 2025