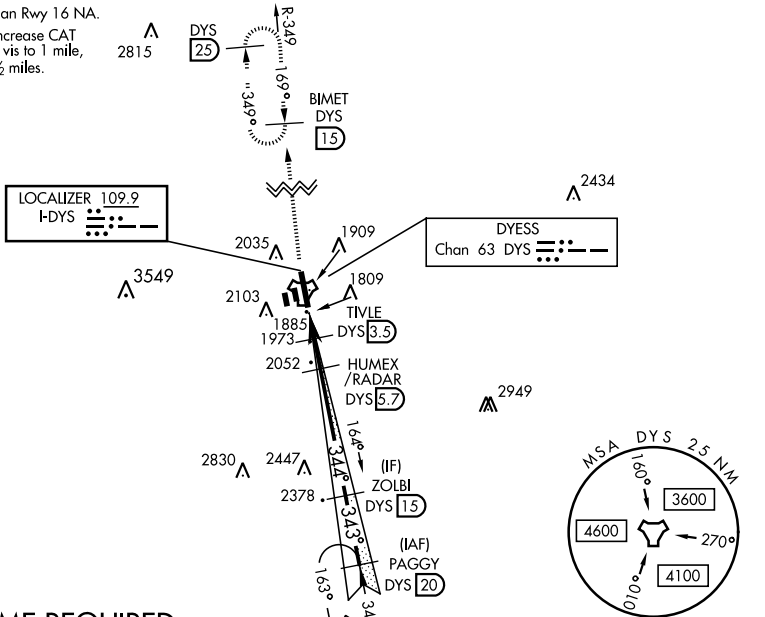


# ILS or LOC W RWY 34

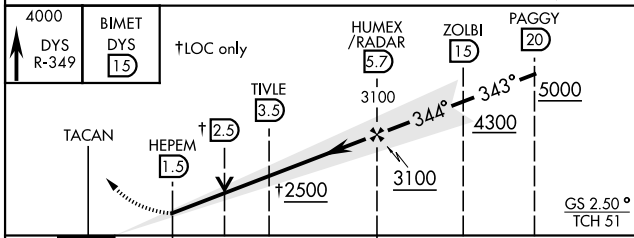
LOC I-DYS <b>109.9</b>	APCH CRS <b>344°</b>	Rwy Idg <b>13,500</b> TDZE <b>1788</b> Arprt Elev <b>1790</b>	AL-2 [USAF]	DYESS AFB (KDYS)
* When ALS inop, increase all CAT RVR to 40 and vis to ¾ mile. ** When ALS inop, increase CAT AB RVR to 55 and vis to 1 mile, CAT CDE vis to 1 ½ miles.			ALSF-1 	MISSED APPROACH: Climb to 4000 via DYS TACAN R-349 to BIMET and hold.
ATIS ★ <b>269.175</b>	ABILENE APP CON <b>125.0 338.3</b> EAST <b>127.2 282.3</b> WEST	DYESS TOWER <b>133.0 257.675</b>	GND CON <b>118.35 275.8</b>	ASR

\*\*\* Circling to other than Rwy 16 NA.  
\*\*\*\* When ALS inop, increase CAT AB RVR to 55 and vis to 1 mile, CAT CDE vis to 1 ½ miles.

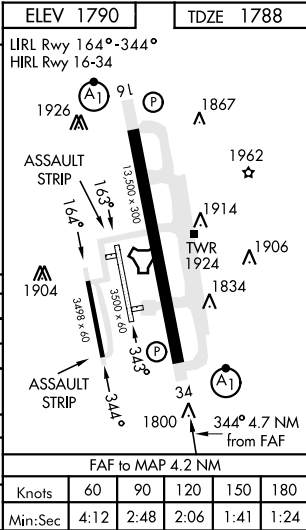


## RADAR or DME REQUIRED

EMERG SAFE ALT 100 NM 4600



CATEGORY	A	B	C	D	E
S-ILS 34*	1988/24		200	(200-½)	
S-LOC 34**	2240/24	452 (500-½)	2240/45	452 (500-¾)	
CIRCLING***	2300-1	2320-1	2460-1¾	2460-2	2460-2¼
	510 (600-1)	530 (600-1)	670 (700-1¾)	670 (700-2)	670 (700-2¼)
WITHOUT LAST STEPDOWN FIX					
S-LOC 34****	2320/24	532 (600-½)	2320/55	532	(600-1)
CIRCLING***	2320-1	530 (600-1)	2460-1¾	2460-2	2460-2¼
			670 (700-1¾)	670 (700-2)	670 (700-2¼)



# ILS or LOC W RWY 34

SC-2, 20 FEB 2025 to 20 MAR 2025

SC-2, 20 FEB 2025 to 20 MAR 2025