

TACAN W RWY 16

TACAN	DYS	APCH CRS	Rwy Idg	13,500
Chan	63	169°	TDZE	1790
			Arprt Elev	1790

AL-2 [USAF]

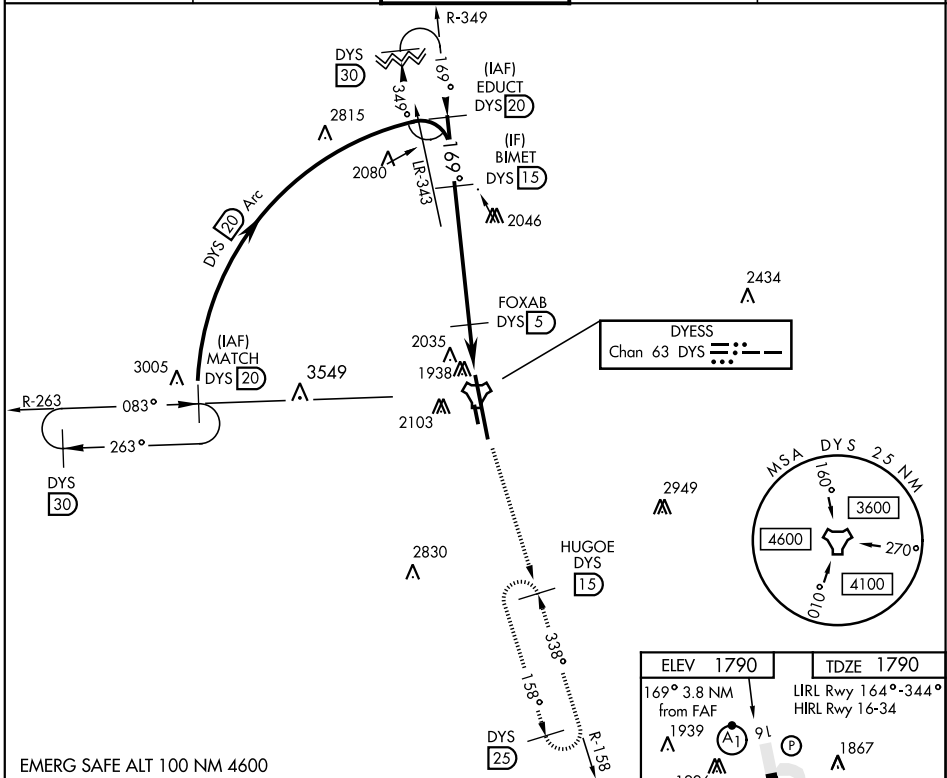
DYESS AFB (KDYS)

* When ALS inop, increase CAT AB RVR to 55 and vis to 1 mile, CAT CDE vis to 1¼ miles.
 ** Circling to other than RWY 34 NA



MISSED APPROACH: Climb to 4000 via
 DYS TACAN R-158 to HUGOE and hold.

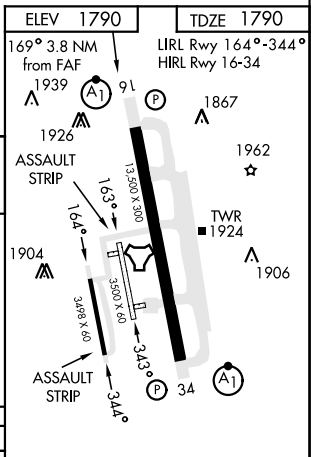
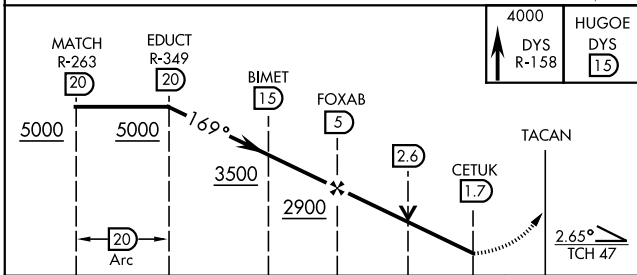
ATIS ★ 269.175	ABILENE APP CON 125.0 338.3 EAST 127.2 282.3 WEST	DYESS TOWER 133.0 257.675	GND CON 118.35 275.8	ASR
-------------------	---	------------------------------	-------------------------	-----



SC-2, 20 FEB 2025 to 20 MAR 2025

SC-2, 20 FEB 2025 to 20 MAR 2025

EMERG SAFE ALT 100 NM 4600



CATEGORY	A	B	C	D	E
S-16 *	2220/24	430 (500-½)	2220/40	430 (500-¾)	
CIRCLING **	2300-1 510 (600-1)	2320-1 530 (600-1)	2460-1¾ 670 (700-1¾)	2460-2 670 (700-2)	2460-2¼ 670 (700-2¼)

FAF to MAP 3.3 NM					
Knots	60	90	120	150	180
Min:Sec	3:18	2:12	1:39	1:19	1:06

TACAN W RWY 16