

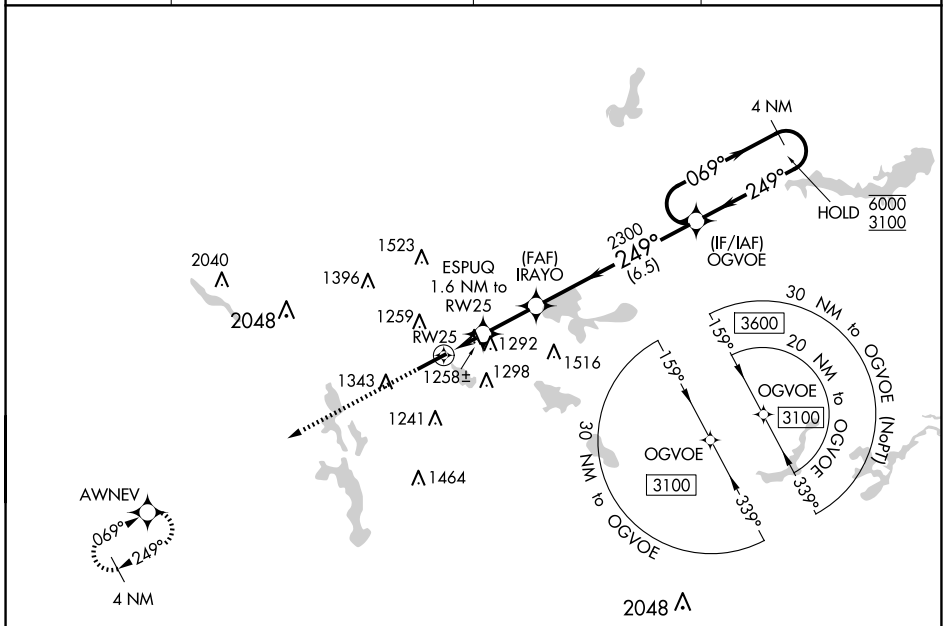
WAAS CH 99735 W25A	APP CRS 249°	Rwy Idg TDZE Apt Elev	6074 1059 1068
--	------------------------	-----------------------------	---

RNAV (GPS) RWY 25

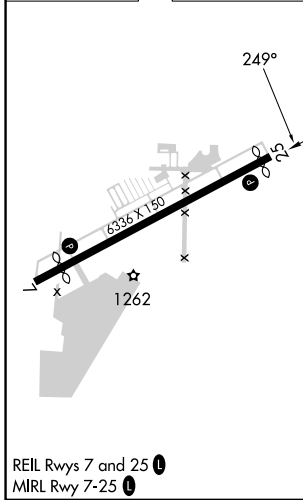
AKRON FULTON INTL (AKR)

RNP APCH.	MISSED APPROACH: Climb to 3100 direct AWNEV and hold.
⚠ ⚠	Rwy 25 helicopter visibility reduction below 1 SM NA. Circling Rwy 7 NA at night.

ASOS 126.825	CLEVELAND APP CON ★ 125.5 371.875	CLNC DEL 121.6	UNICOM 123.075 (CTAF) Ⓛ
------------------------	---	--------------------------	--



ELEV 1068	TDZE 1059
-----------	-----------



3100	AWNEV	Visual Segment - Obstacles.	4 NM Holding Pattern	
↑	☀	ESPUQ 1.6 NM to RWY 25	IRAYO	
		RWY 25	2300	
		1600	249°	
		1.6 NM	2.2 NM	
		6.5 NM		
CATEGORY	A	B	C	D
LP MDA	1520-1	461 (500-1)	1520-1 3/8	461 (500-1 3/8)
LNAV MDA	1560-1	501 (500-1)	1560-1 3/8	501 (500-1 3/8)
Ⓛ CIRCLING	1600-1	1680-1	1800-2	1840-2 1/2
	532 (600-1)	612 (700-1)	732 (800-2)	772 (800-2 1/2)

AKRON, OHIO
Orig-D 08SEP22

41°02'N-81°28'W

AKRON FULTON INTL (AKR)

RNAV (GPS) RWY 25

EC-2, 20 FEB 2025 to 20 MAR 2025

EC-2, 20 FEB 2025 to 20 MAR 2025