

HI-ILS or LOC Z RWY 16

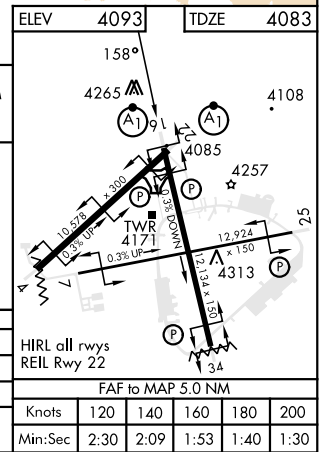
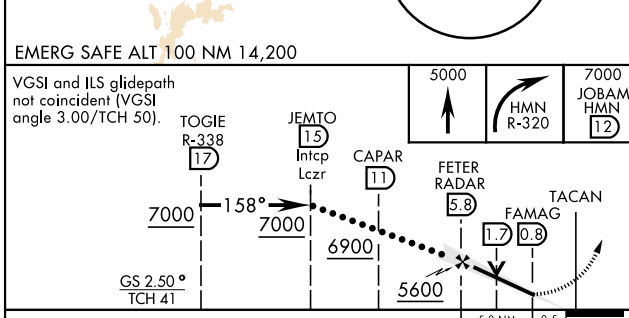
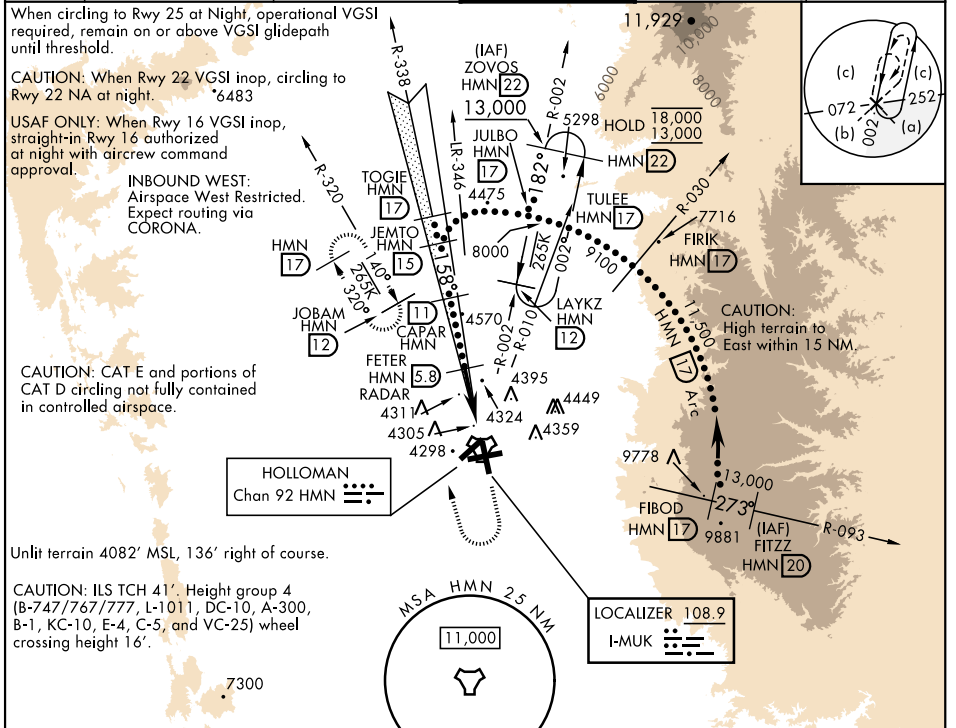
LOC I-MUK 108.9	APCH CRS 158°	Rwy ldg 12,134 TDZE 4083 Arprt Elev 4093
---------------------------	-------------------------	---

[USAF]

HOLLOMAN AFB (KHMM)

RADAR or DME required.		ALSF-1 	MISSED APPROACH: Climb straight ahead to 7000, passing 5000 turn right and intercept HMN R-320 outbound to JOBAM and hold.
------------------------	--	------------	--

ATIS ★ 273.5	ALBUQUERQUE CENTER 132.65 257.6	APP CON 120.6 269.225	TOWER ★ 119.3 254.4	GND CON 127.05 275.8	CLNC DEL 126.7 289.4
------------------------	---	---------------------------------	-------------------------------	--------------------------------	--------------------------------



HI-ILS or LOC Z RWY 16

SW-1, 20 FEB 2025 to 20 MAR 2025

SW-1, 20 FEB 2025 to 20 MAR 2025