

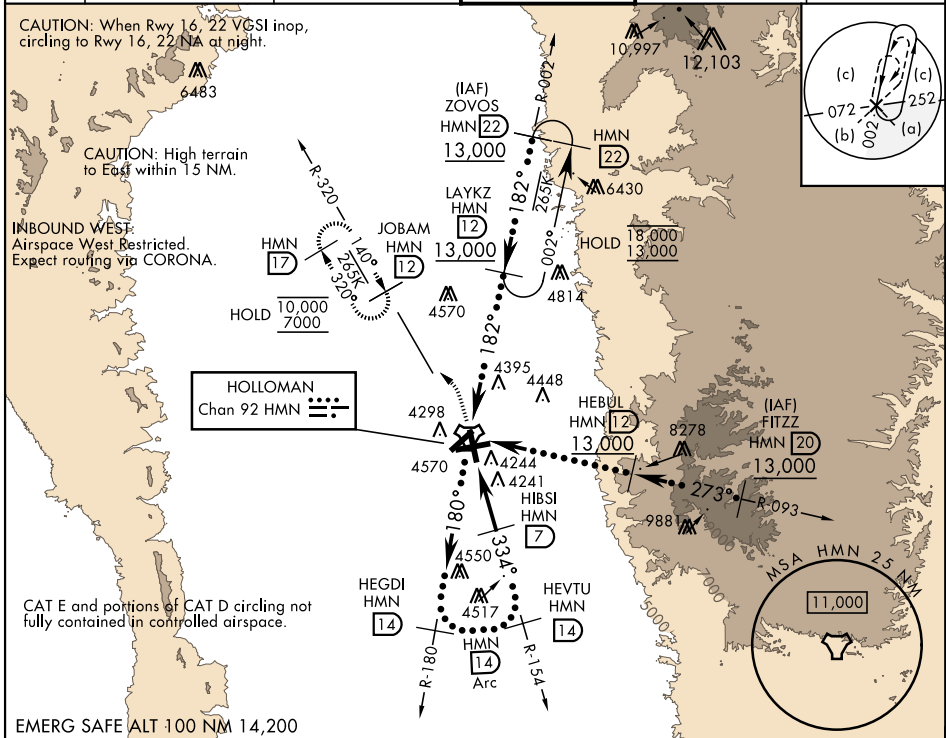
HI-TACAN RWY 34

TACAN HMN Chan 92	APCH CRS 334°	Rwy ldg 12,134 TDZE 4058 Arpt Elev 4093	AL-7 [USAF]	HOLLOMAN AFB (KHMN)
----------------------	------------------	---	-------------	---------------------

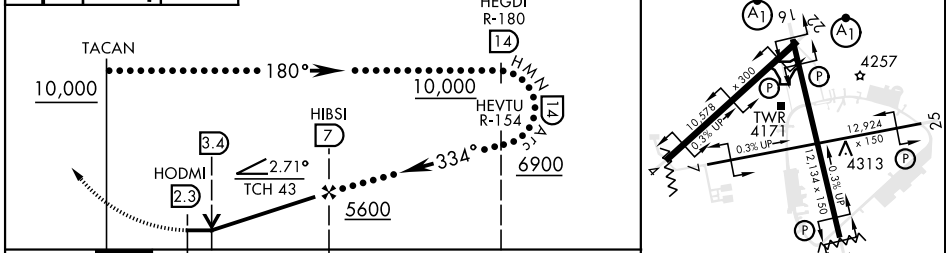
When circling to Rwy 25 at night, operational VGSI required, remain on or above VGSI glidepath until threshold.

MISSÉ APPROACH: Climb straight ahead to 7000, passing 5000 turn left to intercept HMN TACAN R-320 to JOBAM and hold.

ATIS ★ 273.5	ALBUQUERQUE CENTER 132.65 257.6	APP CON 120.6 269.225	TOWER ★ 119.3 254.4	GND CON 127.05 275.8	CLNC DEL 126.7 289.4
-----------------	------------------------------------	--------------------------	------------------------	-------------------------	-------------------------



5000	7000	VGSI and descent angles not coincident (VGSI Angle 2.50/TCH 43).	ELEV 4093	TDZE 4058
------	------	--	-----------	-----------



CATEGORY	A	B	C	D	E
S-34	4540-1	482 (500-1)	4540-1 ³ / ₈	482 (500-1 ³ / ₈)	
C CIRCLING	4640-1	547 (600-1)	4680-1 ¹ / ₂	4740-2	4780-2 ¹ / ₂
			587 (600-1 ¹ / ₂)	647 (700-2)	687 (700-2 ¹ / ₂)

HIRL all rwys
REIL Rwy 22

334° to TACAN

HI-TACAN RWY 34

SW-1, 20 FEB 2025 to 20 MAR 2025

SW-1, 20 FEB 2025 to 20 MAR 2025