

ALAMOGORDO, NEW MEXICO

# ILS or LOC X RWY 16

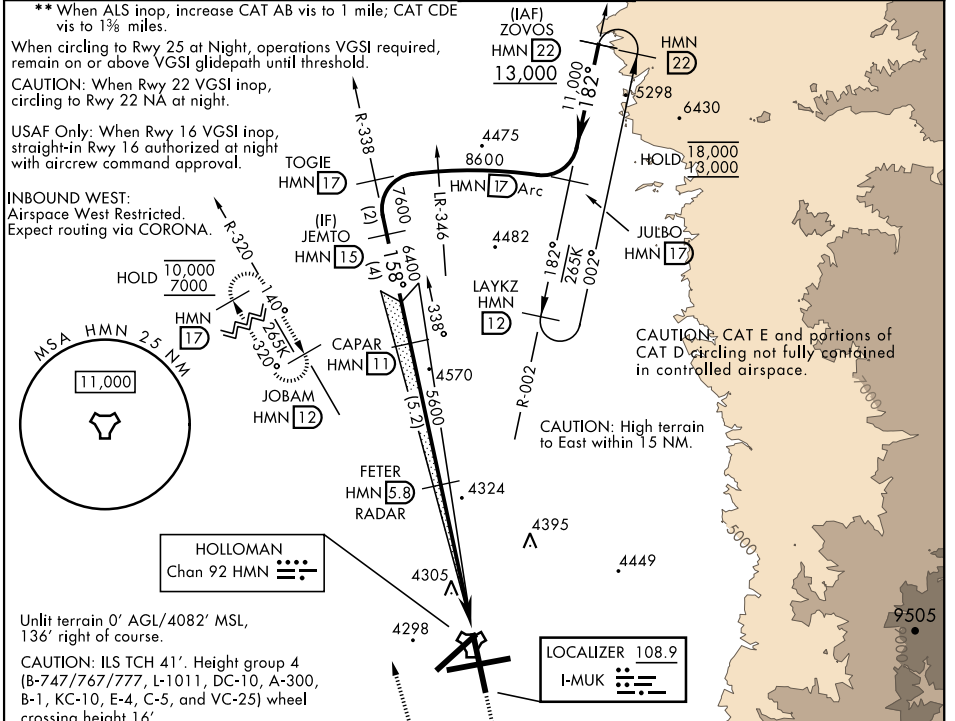
LOC I-MUK <b>108.9</b>	APCH CRS <b>158°</b>	Rwy ldg <b>12,134</b> TDZE <b>4083</b> Arpt Elev <b>4093</b>
---------------------------	-------------------------	---

AL-7 [USAF]

HOLLOMAN AFB (KHMM)

RADAR or DME required.		ALSIF-1 	MISSED APPROACH: Climb straight ahead to 7000, passing 5000 turn right and intercept HMN R-320 outbound to JOBAM and hold.
* When ALS inop, increase vis to 3/4 miles.			

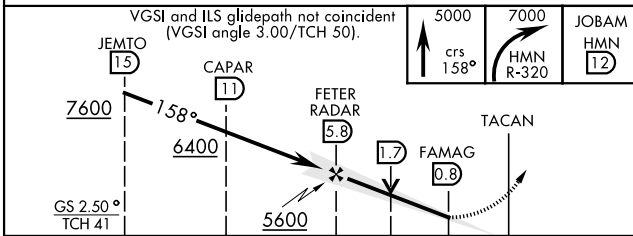
ATIS * <b>273.5</b>	ALBUQUERQUE CENTER <b>132.65 257.6</b>	APP CON <b>120.6 269.225</b>	TOWER * <b>119.3 254.4</b>	GND CON <b>127.05 275.8</b>	CLNC DEL <b>126.7 289.4</b>
------------------------	---	---------------------------------	-------------------------------	--------------------------------	--------------------------------



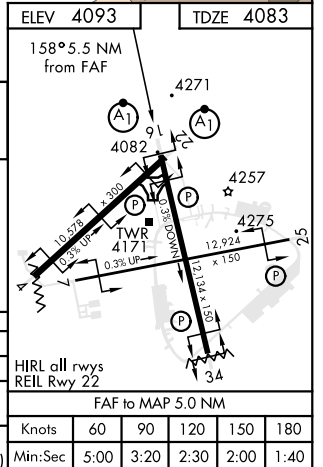
Unlit terrain 0' AGL/4082' MSL, 136' right of course.

CAUTION: ILS TCH 41'. Height group 4 (B-747/767/777, L-1011, DC-10, A-300, B-1, KC-10, E-4, C-5, and VC-25) wheel crossing height 16'.

EMERG SAFE ALT 100 NM 14,200



CATEGORY	A	B	C	D	E
S-ILS 16*	4283-1/2		200	(200-1/2)	
S-LOC 16**	4640-1/2 517 (600-1/2)		4600-1	517	(600-1)
CIRCLING	4640-1 547 (600-1)		4680-1 1/2 587 (600-1 1/2)	4740-2 647 (700-2)	4780-2 1/2 687 (700-2 1/2)



ALAMOGORDO, NEW MEXICO

32° 52'N-106° 06'W

HOLLOMAN AFB (KHMM)

Amtd 4 11AUG22

# ILS or LOC X RWY 16

SW-1, 20 FEB 2025 to 20 MAR 2025

SW-1, 20 FEB 2025 to 20 MAR 2025