

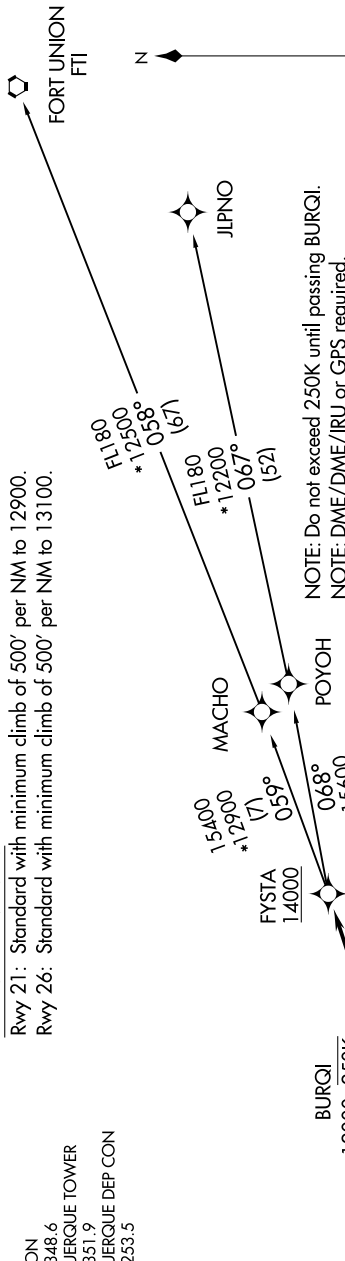
SW-1, 20 FEB 2025 to 20 MAR 2025

D-ATIS 118.0 257.7
CLNC DEL 119.2 259.3
CPDLC
GND CON 121.9 348.6
ALBUQUERQUE TOWER 120.3 351.9
ALBUQUERQUE DEP CON 127.4 253.5

TAKEOFF MINIMUMS

Rwy 21: Standard with minimum climb of 500' per NM to 12900.
Rwy 26: Standard with minimum climb of 500' per NM to 13100.

**TOP ALTITUDE:
FL200**



NOTE: Do not exceed 250K until passing BURQI.
NOTE: DME/DME/IRU or GPS required.
NOTE: For turbojet aircraft only.
NOTE: RNAV 1.
NOTE: RADAR required for non-GPS equipped aircraft.
NOTE: If unable to accept climb gradient, advise ATC on initial contact.

DEPARTURE ROUTE DESCRIPTION

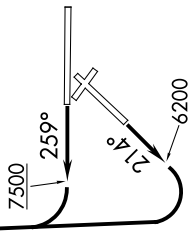
TAKEOFF RUNWAY 21: Climb heading 214° to 6200, then right turn direct BLUUN, cross BLUUN at or above 11000, then on track 061° to BURQI, cross BURQI at or above 12000, then on track 061° to FYSTA, cross FYSTA at or above 14000, thence. . . .

TAKEOFF RUNWAY 26: Climb heading 259° to 7500, then right turn direct BLUUN, cross BLUUN at or above 11000, then on track 061° to BURQI, cross BURQI at or above 12000, then on track 061° to FYSTA, cross FYSTA at or above 14000, thence. . . .

. . . . (transition). Maintain FL200, expect filed altitude ten minutes after departure.

FORT UNION TRANSITION (FYSTA3.FTI)

JIPNO TRANSITION (FYSTA3.JIPNO)



NOTE: Chart not to scale.

SW-1, 20 FEB 2025 to 20 MAR 2025