

(JEMEZ3.JEMEZ) 21336

JEMEZ THREE DEPARTURE (RNAV) AL-12 (FAA)

ALBUQUERQUE INTL SUNPORT (ABQ)
ALBUQUERQUE, NEW MEXICO

D-ATIS
118.0 257.7
CLNC DEL
119.2 259.3
CPDLC
GND CON
121.9 348.6
ALBUQUERQUE TOWER
120.3 351.9
ALBUQUERQUE DEP CON
127.4 253.5

**TOP ALTITUDE:
FL200**

TAKEOFF MINIMUMS

Rwy 3: Standard with minimum climb of
500' per NM to 11400.

Rwy 8: Standard with minimum climb of
500' per NM to 11300.

NOTE: Do not exceed 250K until passing GRREN.

NOTE: Takeoff Rwy 8, do not exceed 230K until
passing TYILR.

NOTE: DME/DME/IRU or GPS required.

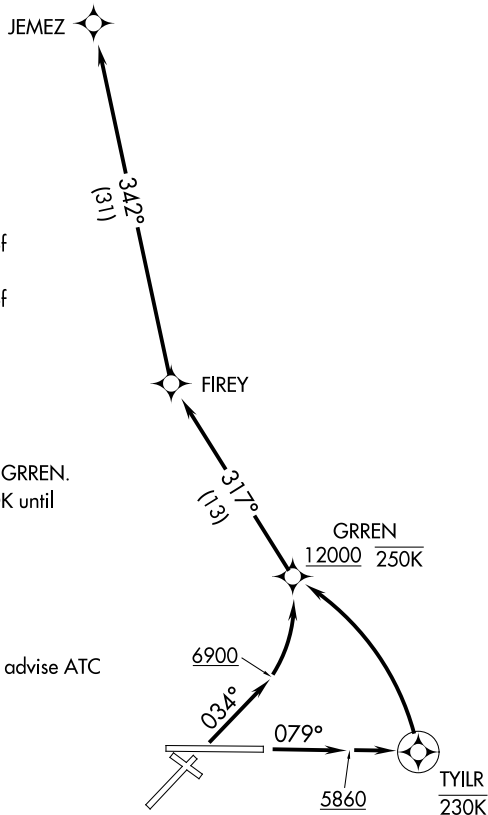
NOTE: For turbojet aircraft only.

NOTE: RNAV 1.

NOTE: RADAR required.

NOTE: If unable to accept climb gradient, advise ATC
on initial contact.

NOTE: Chart not to scale.



SW-1, 20 FEB 2025 to 20 MAR 2025

SW-1, 20 FEB 2025 to 20 MAR 2025



DEPARTURE ROUTE DESCRIPTION

TAKEOFF RUNWAY 3: Climb heading 034° to 6900, then left turn direct GRREN, cross GRREN at or above 12000, then on depicted route to JEMEZ, thence

TAKEOFF RUNWAY 8: Climb heading 079° to 5860 and direct TYILR, then left turn direct GRREN, cross GRREN at or above 12000, then on depicted route to JEMEZ, thence

. . . . Maintain FL200, expect filed altitude ten minutes after departure.

JEMEZ THREE DEPARTURE (RNAV)
(JEMEZ3.JEMEZ) 25JUN15

ALBUQUERQUE, NEW MEXICO
ALBUQUERQUE INTL SUNPORT (ABQ)