

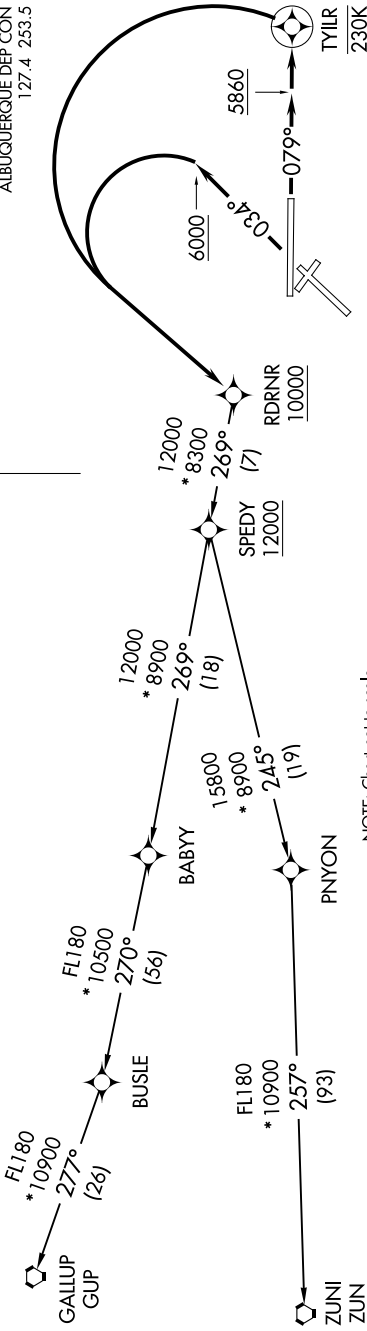
# RDRNR THREE DEPARTURE (RNAV) AL-12 (FAA)

SW-1, 20 FEB 2025 to 20 MAR 2025

**TOP ALTITUDE:  
FL200**

D-ATIS 118.0 257.7  
 CLINC DEL 119.2 259.3  
 CPDLC  
 GND CON 121.9 348.6  
 ALBUQUERQUE TOWER 120.3 351.9  
 ALBUQUERQUE DEP CON 127.4 253.5

**TAKEOFF MINIMUMS**  
 Rwy 3: Standard with minimum climb of 500' per NM to 10900.  
 Rwy 8: Standard with minimum climb of 500' per NM to 10200.



NOTE: Chart not to scale.

## DEPARTURE ROUTE DESCRIPTION

**TAKEOFF RUNWAY 3:** Climb heading 034° to 6000, then left turn direct RDRNR, cross RDRNR at or above 10000, thence . . . .

**TAKEOFF RUNWAY 8:** Climb heading 079° to 5860, and direct TYLIR, then left turn direct RDRNR, cross RDRNR at or above 10000, thence . . . .

. . . . (transition). Maintain FL200. Expect filed altitude ten minutes after departure.

GALLUP TRANSITION (RDRNR3.GUP)

ZUNI TRANSITION (RDRNR3.ZUN)

NOTE: Rwy 8, do not exceed 230K until passing TYLIR.

NOTE: RADAR required.

NOTE: DME/DME/IRU or GPS required.

NOTE: RNAV 1.

NOTE: For Turbojet aircraft only.

NOTE: If unable to accept climb gradient, advise ATC on initial contact.

NOTE: For non-GPS equipped aircraft, ABQ and ONM DME's must be operational.

# RDRNR THREE DEPARTURE (RNAV)

SW-1, 20 FEB 2025 to 20 MAR 2025