

APP CRS **259°**  
 Rwy Idg **13793**  
 TDZE **5355**  
 Apt Elev **5355**

# RNAV (RNP) Y RWY 26

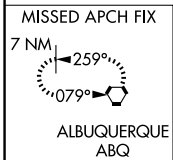
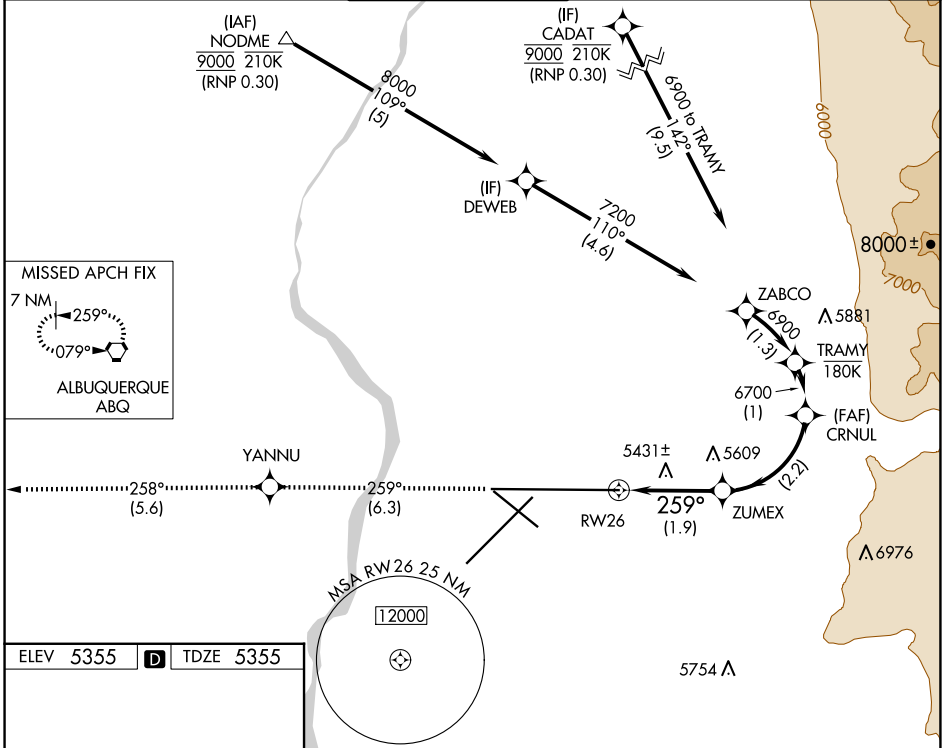
ALBUQUERQUE INTL SUNPORT (ABQ)

RNP AR APCH, RF required.

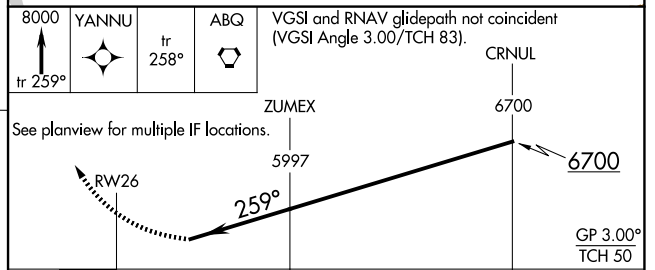
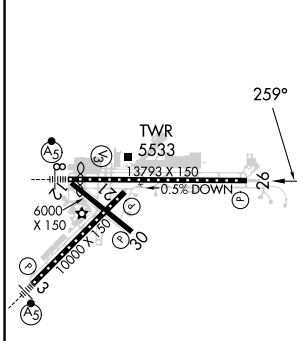
ASR For uncompensated Baro-VNAV systems, procedure NA below -12°C or above 48°C.

MISSED APPROACH: Climb to 8000 on track 259° to YANNU and on track 258° to ABQ VORTAC and hold.

D-ATIS <b>118.0 257.7</b>	ALBUQUERQUE APP CON <b>123.9 354.1</b>	ALBUQUERQUE TOWER <b>120.3 351.9</b>	GND CON <b>121.9 348.6</b>	CLNC DEL <b>119.2 259.3</b>	CPDLC
------------------------------	---	---	-------------------------------	--------------------------------	-------



ELEV 5355 **D** TDZE 5355



CATEGORY	A	B	C	D
RNP 0.15 DA	5728-1¼ 373 (400-1¼)			

MIRL Rwy 12-30  
 TDZ/CL Rwy 3 and 8  
 HIRL Rwy 3-21 and 8-26  
 REIL Rwy 21, 26, and 30

**AUTHORIZATION REQUIRED**

SW-1, 20 FEB 2025 to 20 MAR 2025

SW-1, 20 FEB 2025 to 20 MAR 2025