

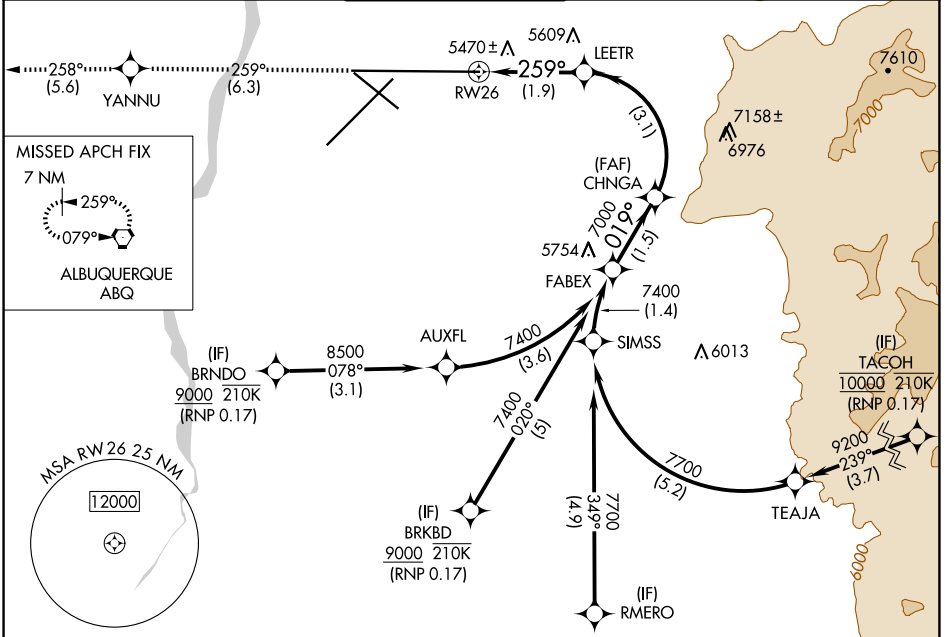
APP CRS 259°	Rwy Idg TDZE Apt Elev	13793 5355 5355
------------------------	-----------------------------	--

RNAV (RNP) Z RWY 26

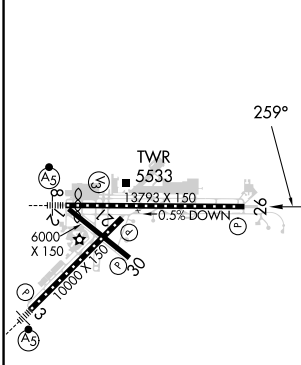
ALBUQUERQUE INTL SUNPORT (ABQ)

RNP AR APCH, RF required.	MISSED APPROACH: Climb to 8000 on track 259° to YANNU and on track 258° to ABQ VORTAC and hold.
▼ For uncompensated Baro-VNAV systems, procedure NA ASR below -13°C or above 48°C.	

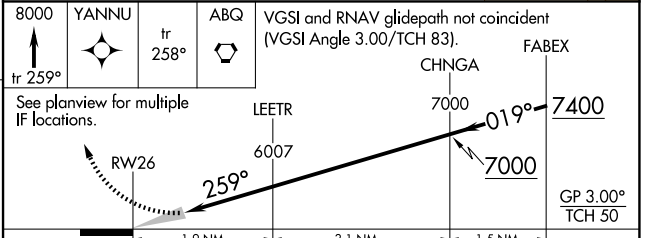
D-ATIS 118.0 257.7	ALBUQUERQUE APP CON 123.9 354.1	ALBUQUERQUE TOWER 120.3 351.9	GND CON 121.9 348.6	CLNC DEL 119.2 259.3	CPDLC
------------------------------	---	---	-------------------------------	--------------------------------	-------



ELEV 5355	D	TDZE 5355
-----------	----------	-----------



8000	YANNU	ABQ	VGSI and RNAV glidepath not coincident (VGSI Angle 3.00/TCH 83).
tr 259°	tr 258°		FABEX



CATEGORY	A	B	C	D
RNP 0.17 DA	5745-1¼		390 (400-1¼)	

AUTHORIZATION REQUIRED

SW-1, 20 FEB 2025 to 20 MAR 2025

SW-1, 20 FEB 2025 to 20 MAR 2025