

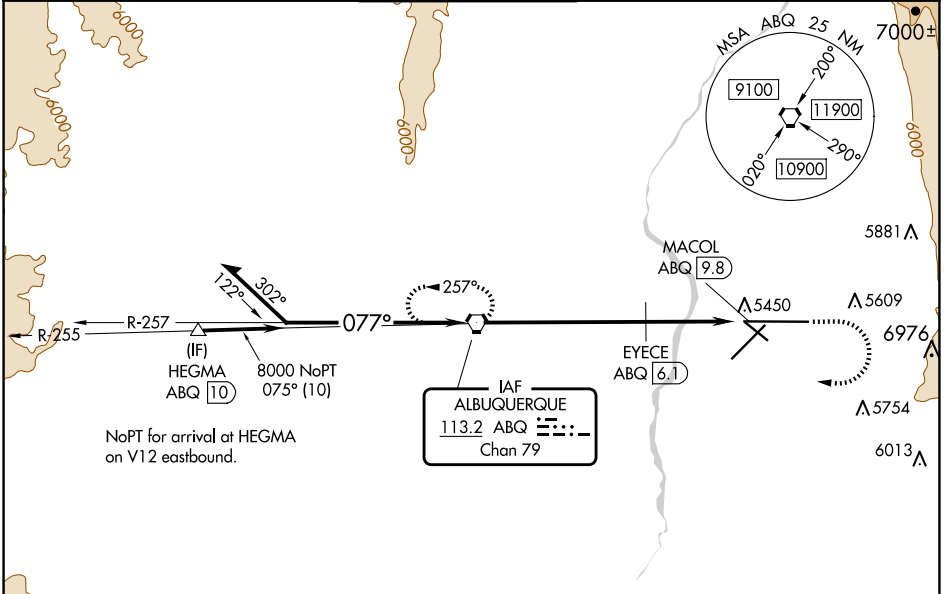
VORTAC ABQ <b>113.2</b> Chan 79	APP CRS <b>077°</b>	Rwy Idg <b>12793</b> TDZE <b>5320</b> Apt Elev <b>5355</b>
---------------------------------------	------------------------	--

# VOR RWY 8

ALBUQUERQUE INTL SUNPORT (ABQ)

<p><b>▲</b> EYECE FIX MINIMUMS: For inop ALS, increase S-8 Cat C/D/E visibility to RVR 5500.</p> <p><b>ASR</b> For inop ALS, increase S-8 Cat E visibility to 3 SM. Circling Cat E N/A southeast of Rwy 3-21 and northeast of Rwy 12-30.</p>	<p>MALS R</p>	<p>MISSED APPROACH: Climb to 5800 then climbing right turn to 8000 direct ABQ VORTAC and hold.</p>

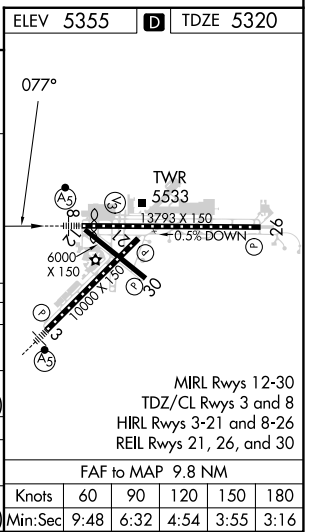
D-ATIS <b>118.0 257.7</b>	ALBUQUERQUE APP CON <b>123.9 354.1</b>	ALBUQUERQUE TOWER <b>120.3 351.9</b>	GND CON <b>121.9 348.6</b>	CLNC DEL <b>119.2 259.3</b>	CPDLC
------------------------------	---	---	-------------------------------	--------------------------------	-------



SW-1, 20 FEB 2025 to 20 MAR 2025

SW-1, 20 FEB 2025 to 20 MAR 2025

ELEV 5355		TDZE 5320			
<p>Remain within 15 NM</p> <p>8200</p> <p>257°</p> <p>077°</p> <p>8000</p> <p>6380</p> <p>6.1 NM</p> <p>2.6 NM</p> <p>1.1 NM</p>		<p>5800</p> <p>8000</p> <p>ABQ</p> <p>EYECE ABQ (6.1)</p> <p>ABQ (8.7)</p> <p>MACOL ABQ (9.8)</p>			
CATEGORY	A	B	C	D	E
S-8	6380/40 1060 (1100-3/4)	6380/55 1060 (1100-1)	6380-2 1/2 1060 (1100-2 1/2)		
CIRCLING	6380-1 1/4 1025 (1100-1 1/4)	6380-1 1/2 1025 (1100-1 1/2)	6380-3 1105 (1100-3)	6460-3 1105 (1200-3)	7460-3 2105 (2200-3)
EYECE FIX MINIMUMS					
S-8	5700/24	380 (400-1/2)	5700/40 380 (400-3/4)		
CIRCLING	5840-1 485 (500-1)	5920-1 565 (600-1)	5940-1 1/2 585 (600-1 1/2)	6460-3 1105 (1200-3)	7460-3 2105 (2200-3)



MIRL Rwy 12-30  
TDZ/CL Rwy 3 and 8  
HIRL Rwy 3-21 and 8-26  
REIL Rwy 21, 26, and 30

FAF to MAP 9.8 NM					
Knots	60	90	120	150	180
Min:Sec	9:48	6:32	4:54	3:55	3:16