

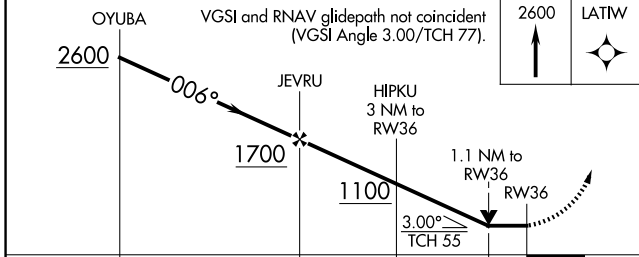
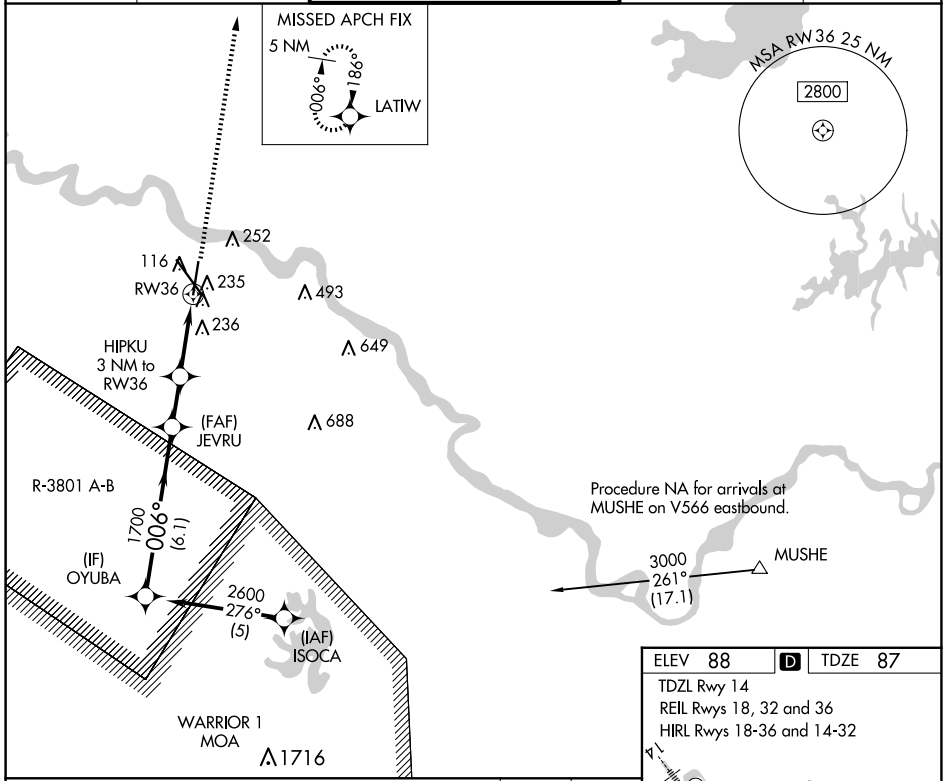
APP CRS	Rwy Idg	<b>7001</b>
<b>006°</b>	TDZE	<b>87</b>
	Apt Elev	<b>88</b>

# RNAV (GPS) RWY 36

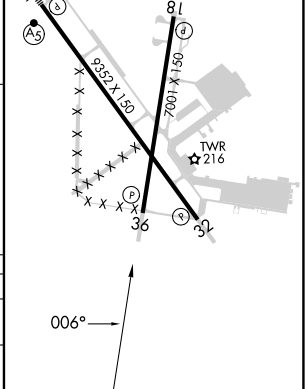
ALEXANDRIA INTL (AEX)

RNP APCH - GPS.	MISSED APPROACH: Climb to 2600 direct LATIW and hold.
<p>▼ Rwy 36 helicopter visibility reduction below 3/4 SM NA.</p> <p>▲ Procedure NA when R-3801 A-B in use.</p>	

ASOS <b>123.975</b>	POLK APP CON <b>125.4 254.8</b>	ALEXANDRIA TOWER <b>127.35 (CTAF) 269.2</b>	GND CON <b>121.9 372.0</b>	CLNC DEL <b>121.9</b>
------------------------	------------------------------------	--	-------------------------------	--------------------------



ELEV 88	<b>D</b>	TDZE 87
TDZL Rwy 14		
REIL Rwy 18, 32 and 36		
HIRL Rwy 18-36 and 14-32		



CATEGORY	A	B	C	D
RNAV MDA	500-1	413 (500-1)	500-1 1/8	413 (500-1 1/8)
CIRCLING	540-1 452 (500-1)	560-1 472 (500-1)	700-1 1/4 612 (700-1 1/4)	860-2 1/2 772 (800-2 1/2)

SC-4, 20 FEB 2025 to 20 MAR 2025

SC-4, 20 FEB 2025 to 20 MAR 2025