

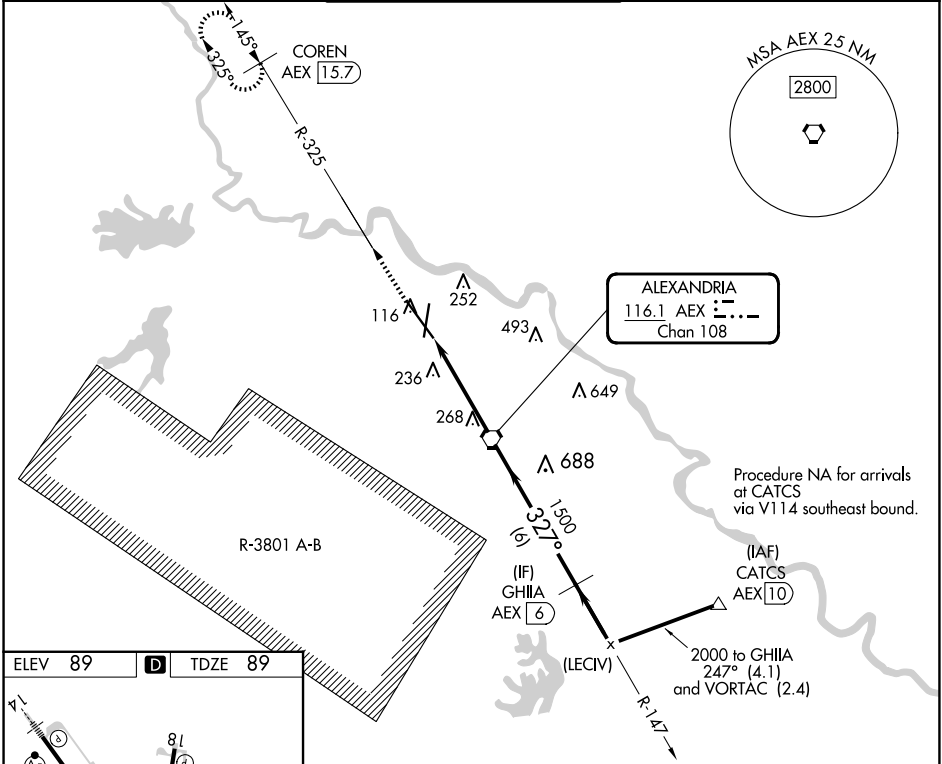
VORTAC AEX <b>116.1</b> Chan <b>108</b>	APP CRS <b>327°</b>	Rwy ldg <b>9352</b> TDZE <b>89</b> Apt Elev <b>89</b>
---	------------------------	---

# VOR/DME RWY 32

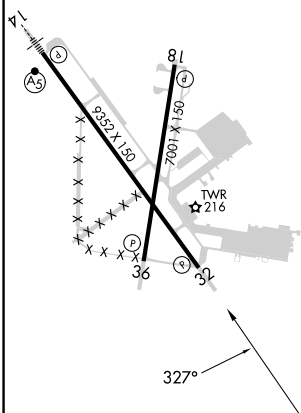
ALEXANDRIA INTL (AEX)

**⚠** RADAR required when R-3801 A-B in use.  
**⚠** Rwy 32 helicopter visibility reduction below 3/4 SM NA.  
 MISSED APPROACH: Climb to 3000 via AEX R-325 to COREN/AEX 15.7 DME and hold.

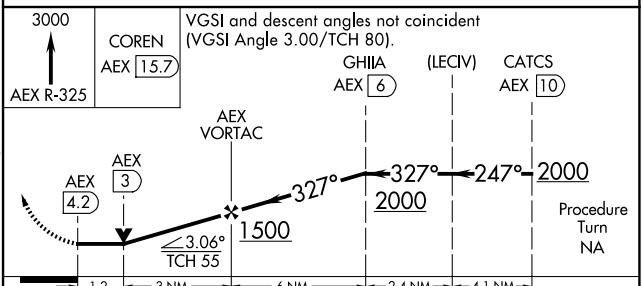
ASOS <b>123.975</b>	POLK APP CON <b>125.4 254.8</b>	ALEXANDRIA TOWER <b>127.35 (CTAF) 269.2</b>	GND CON <b>121.9 372.0</b>	CLNC DEL <b>121.9</b>
------------------------	------------------------------------	--	-------------------------------	--------------------------



ELEV <b>89</b>	<b>D</b>	TDZE <b>89</b>
----------------	----------	----------------



TDZL Rwy 14  
 REIL Rws 18, 32 and 36  
 HIRL Rws 18-36 and 14-32



CATEGORY	A	B	C	D
S-32	520/55	431 (500-1)	520-1¼ 431 (500-1¼)	520-1½ 431 (500-1½)
CIRCLING	540-1 451 (500-1)	560-1 471 (500-1)	700-1¾ 611 (700-1¾)	860-2½ 771 (800-2½)

SC-4, 20 FEB 2025 to 20 MAR 2025

SC-4, 20 FEB 2025 to 20 MAR 2025