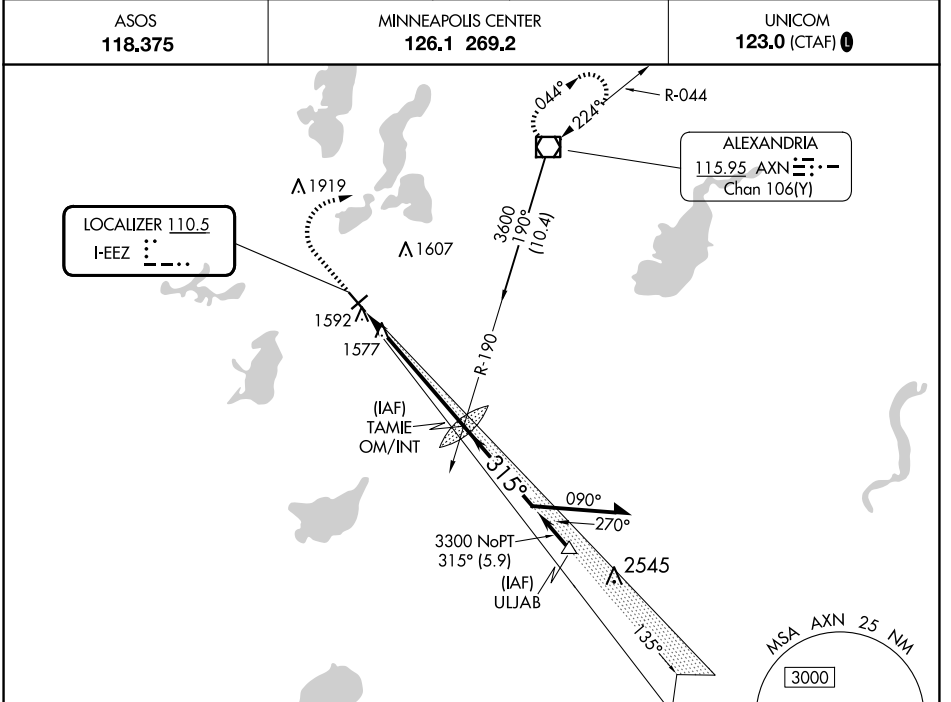


LOC I-EEZ <b>110.5</b>	APP CRS <b>315°</b>	Rwy Idg TDZE Apt Elev	<b>5099</b> <b>1423</b> <b>1425</b>
---------------------------	------------------------	-----------------------------	---

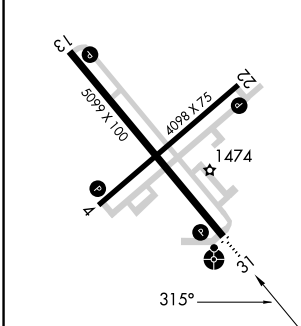
# ILS or LOC RWY 31

ALEXANDRIA RGNL/CHANDLER FLD (AXN)

Inoperative table does not apply to S-LOC 31 Category C.		MISSED APPROACH: Climb to 2500 then climbing right turn to 3500 direct AXN VOR/DME and hold.
	ASOS <b>118.375</b>	



ELEV 1425	TDZE 1423
-----------	-----------

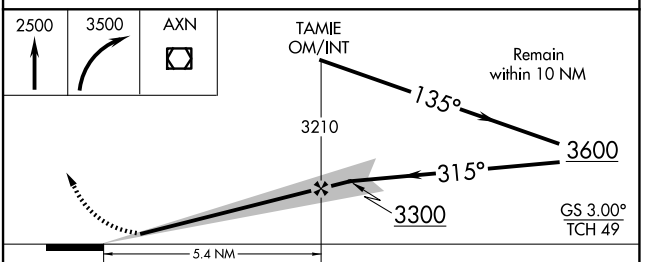


REIL Rwys 4, 13, and 22

MIRL Rwys 4-22 and 13-31

FAF to MAP 5.4 NM

Knots	60	90	120	150	180
Min:Sec	5:24	3:36	2:42	2:10	1:48



CATEGORY	A	B	C	D
S-ILS 31	1673- <sup>3</sup> / <sub>4</sub> 250 (300- <sup>3</sup> / <sub>4</sub> )			
S-LOC 31	1840- <sup>3</sup> / <sub>4</sub> 417 (500- <sup>3</sup> / <sub>4</sub> )	1840-1 <sup>1</sup> / <sub>4</sub> 417 (500-1 <sup>1</sup> / <sub>4</sub> )		
CIRCLING	1920-1 495 (500-1)	1940-1 <sup>1</sup> / <sub>2</sub> 515 (600-1 <sup>1</sup> / <sub>2</sub> )	2000-2 575 (600-2)	

NC-1, 20 FEB 2025 to 20 MAR 2025

NC-1, 20 FEB 2025 to 20 MAR 2025