

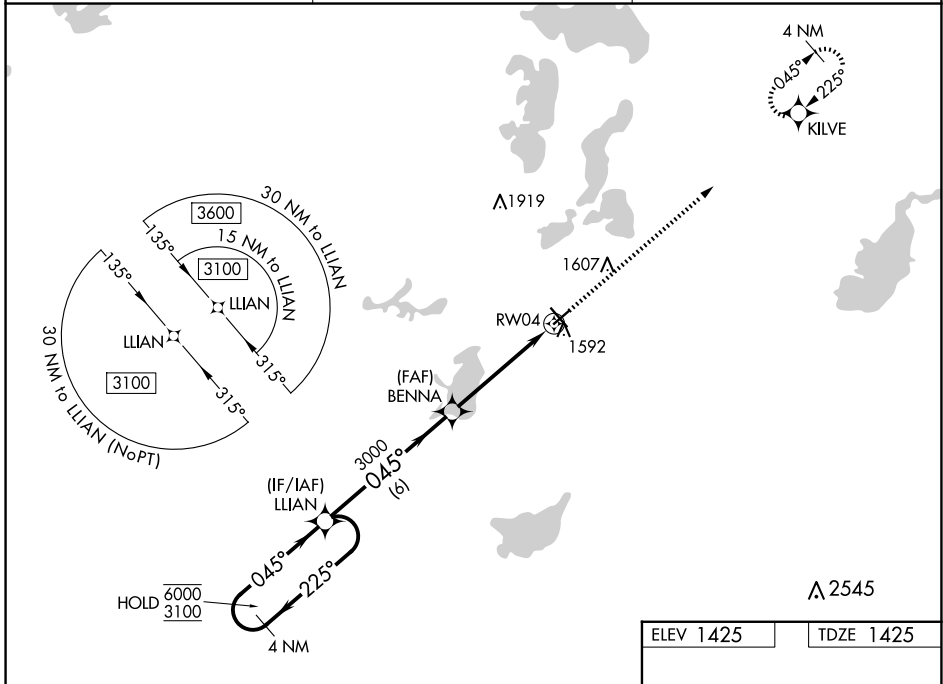
WAAS CH 90245 W04A	APP CRS 045°	Rwy Idg TDZE Apt Elev	4098 1425 1425
--	------------------------	-----------------------------	---

RNAV (GPS) RWY 4

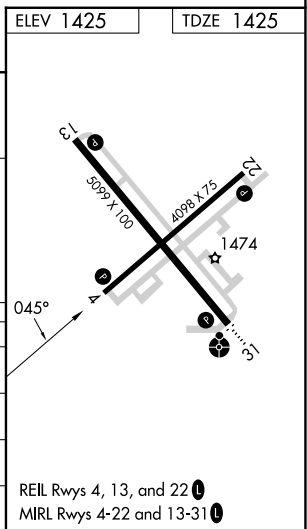
ALEXANDRIA RGNL/CHANDLER FLD (A.XN)

RNP APCH - GPS.	MISSED APPROACH: Climb to 3000 direct KILVE and hold.
<p>▼ Rwy 4 helicopter visibility reduction below 3/4 SM NA.</p> <p>▲ For uncompensated Baro-VNAV systems, LNAV/VNAV NA below -22°C or above 54°C.</p>	

ASOS 118.375	MINNEAPOLIS CENTER 126.1 269.2	UNICOM 123.0 (CTAF) 0
------------------------	--	---------------------------------



4 NM Holding Pattern		LLIAN		BENNA		3000 KILVE	
6000 ← 225°		3100 → 045°		3000		1.2 NM to RWY04	
GP 3.00°		TCH 44		3000		RWY04	
		6 NM		3.6 NM		1.2 NM	
CATEGORY	A	B	C	D			
LPV DA	1675-1 250 (300-1)						
LNAV/VNAV DA	1826-1 1/8 401 (500-1 1/8)						
LNAV MDA	1860-1	435 (500-1)	1860-1 1/4	435 (500-1 1/4)			
CIRCLING	1900-1	475 (500-1)	1940-1 1/2	515 (600-1 1/2)	2000-2	575 (600-2)	



NC-1, 20 FEB 2025 to 20 MAR 2025

NC-1, 20 FEB 2025 to 20 MAR 2025

REIL Rwy 4, 13, and 22 0
MIRL Rwy 4-22 and 13-31 0