

LOC I-BXY <b>111.9</b>	APP CRS <b>135°</b>	Rwy Idg TDZE Apt Elev	<b>5800</b> <b>386</b> <b>394</b>
---------------------------	------------------------	-----------------------------	---

# ILS or LOC RWY 13

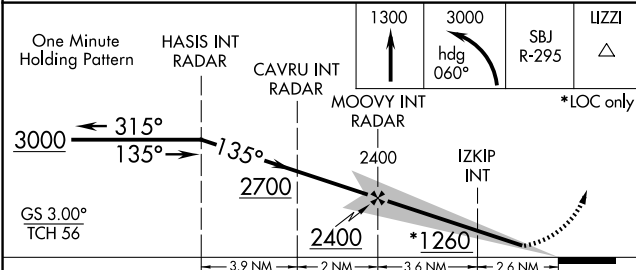
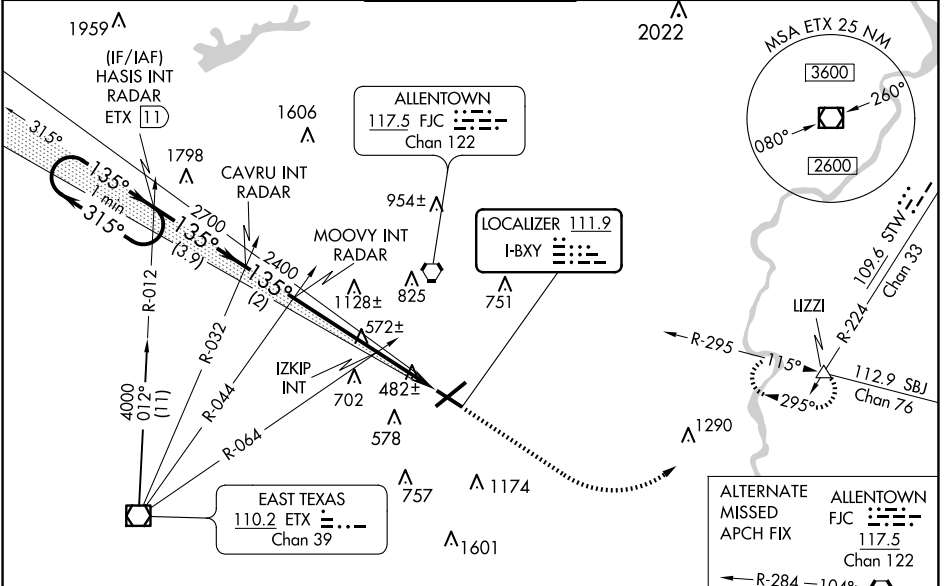
LEHIGH VALLEY INTL (ABE)

**⚠** For inoperative MALSRR, increase IZKIP fix minimums S-LOC 13 Cat C/D visibility to 1 mile.

MALSRR

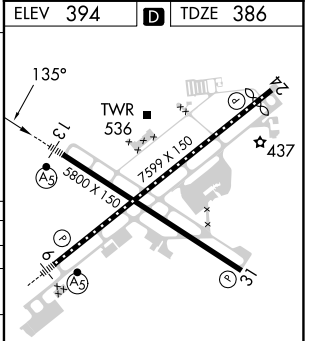
MISSED APPROACH: Climb to 3000 then climbing left turn to 3000 on heading 060° and on SBJ VOR/DME R-295 to IZZI INT and hold.

ATIS <b>126.975</b>	ALLENTOWN APP CON <b>119.65 124.45 351.8</b>	ALLENTOWN TOWER <b>120.5 257.95</b>	GND CON <b>121.9 257.95</b>	CLNC DEL <b>124.05 257.95</b>
------------------------	---	--	--------------------------------	----------------------------------



CATEGORY	A	B	C	D
S-ILS 13	586-½ 200 (200-½)			
S-LOC 13	1260-½ 874 (900-½)	1260-¾ 874 (900-¾)	1260-2	874 (900-2)
<b>C</b> CIRCLING	1260-1¼	866 (900-1¼)	1260-2½ 866 (900-2½)	1600-3 1206 (1300-3)
IZKIP FIX MINIMUMS (DUAL VOR RECEIVERS REQUIRED)				
S-LOC 13	740-½	354 (400-½)	740-⅝	354 (400-⅝)
<b>C</b> CIRCLING	840-1 446 (500-1)	900-1 506 (600-1)	1180-2¼ 786 (800-2¼)	1600-3 1206 (1300-3)

ELEV 394	<b>D</b>	TDZE 386
----------	----------	----------



REIL Rwy 24 and 31					
HIRL Rwy 6-24 and 13-31					
FAF to MAP 6.2 NM					
Knots	60	90	120	150	180
Min:Sec	6:12	4:08	3:06	2:29	2:04

NE-4, 20 FEB 2025 to 20 MAR 2025

NE-4, 20 FEB 2025 to 20 MAR 2025