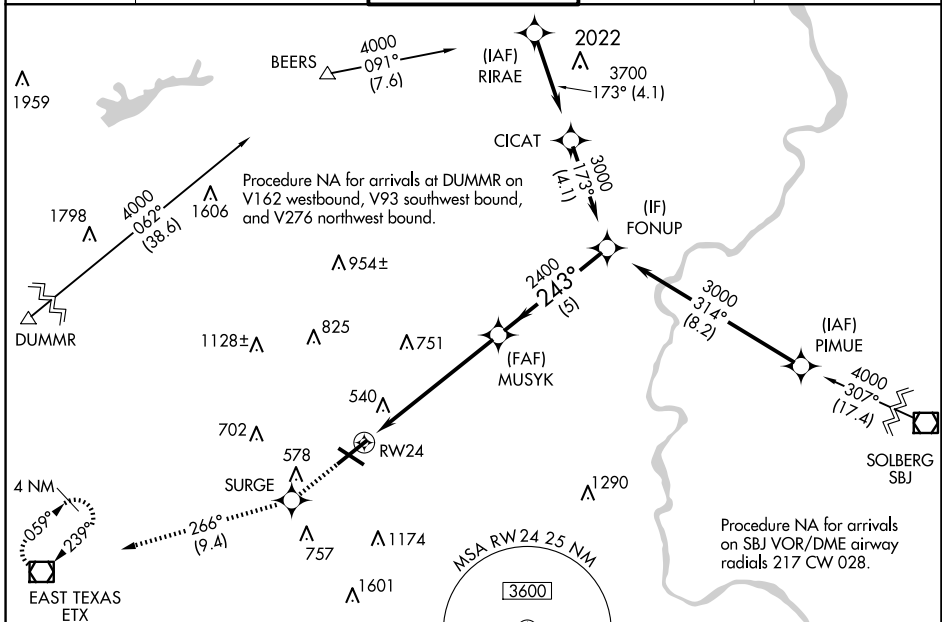


WAAS CH 40332 W24A	APP CRS 243°	Rwy Idg TDZE Apt Elev	7089 387 394
--	------------------------	-----------------------------	---

RNAV (GPS) RWY 24

LEHIGH VALLEY INTL (ABE)

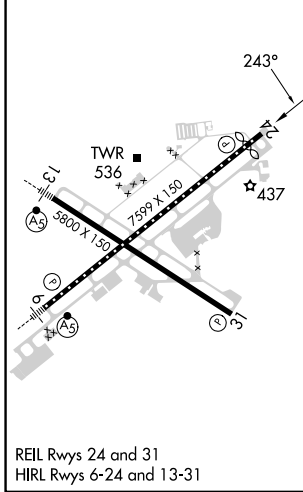
RNP APCH - GPS.		<p>▼ For uncompensated Baro-VNAV systems, LNAV/VNAV ▲ NA below -8°C or above 54°C.</p>		<p>MISSED APPROACH: Climb to 3000 direct SURGE and on track 266° to ETX VOR/DME and hold.</p>	
ATIS 126.975	ALLENTOWN APP CON 119.65 124.45 351.8	ALLENTOWN TOWER 120.5 257.95	GND CON 121.9 257.95	CLNC DEL 124.05 257.95	



NE-4, 20 FEB 2025 to 20 MAR 2025

NE-4, 20 FEB 2025 to 20 MAR 2025

ELEV 394	D	TDZE 387
----------	----------	----------



3000	SURGE	tr 266°	ETX	VGSI and RNAV glidepath not coincident (VGSI Angle 3.00/TCH 71).
		<p>MUSYK 2400</p> <p>FONUP 3000</p> <p>GP 3.00° TCH 55</p>		
CATEGORY	A	B	C	D
LPV DA	587/40 200 (200-3/4)			
LNAV/VNAV DA	783-1 1/4 396 (400-1 1/4)			
LNAV MDA	860/55 473 (500-1)		860-1 3/8 473 (500-1 3/8)	
C CIRCLING	900-1 506 (600-1)		1180-2 1/4 1600-3 786 (800-2 1/4) 1206 (1300-3)	