

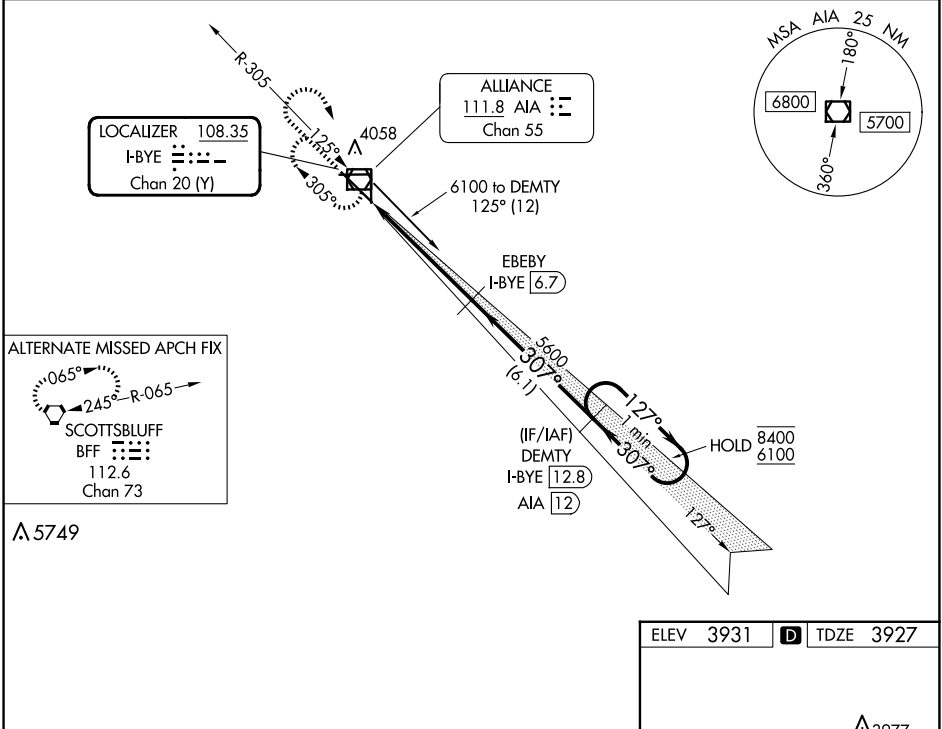
LOC/DME I-BYE 108.35 Chan 20 (Y)	APP CRS 307°	Rwy Idg 9203 TDZE 3927 Apt Elev 3931
---	------------------------	---

ILS or LOC RWY 30

ALLIANCE MUNI (AIA)

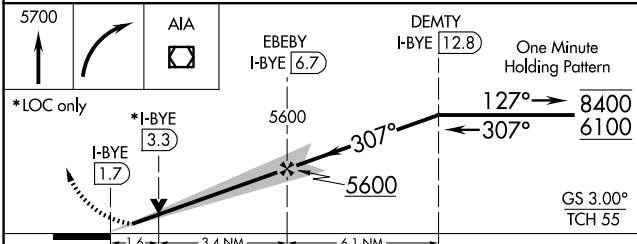
DME required. ▲ NA For inop ALS, increase S-LOC 30 Cats C/D visibility to 1½ SM.	MALSR 	MISSED APPROACH: Climb to 5700 then right turn direct AIA VOR/DME and hold.
--	-----------	---

ASOS 135.075	DENVER CENTER 127.95 338.2	UNICOM 123.0 (CTAF) 0
------------------------	--------------------------------------	---------------------------------



NC-2, 20 FEB 2025 to 20 MAR 2025

NC-2, 20 FEB 2025 to 20 MAR 2025



	*LOC only		*I-BYE 3.3		I-BYE 1.7	
	-1.6		3.4 NM		6.1 NM	
CATEGORY	A	B	C	D		
S-ILS 30	4127-½		200 (200-½)			
S-LOC 30	4500-½ 573 (600-½)		4500-1¼ 573 (600-1¼)			
CIRCLING	4500-1 569 (600-1)		4520-1 589 (600-1)		4580-1¾ 649 (700-1¾) 4640-2¼ 709 (800-2¼)	

