

HI-VOR or TACAN RWY 13

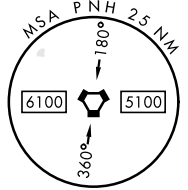
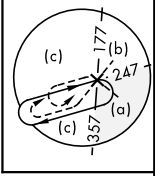
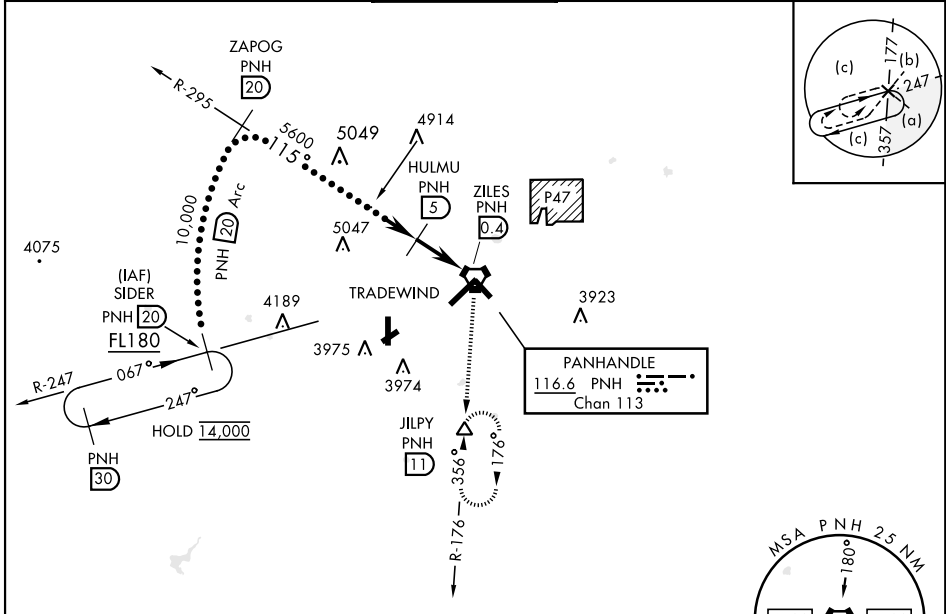
VORTAC PNH 116.6 Chan 113	APCH CRS 115°	Rwy ldg TDZE Arpt Elev 7901 3603 3607	[USAF]	RICK HUSBAND AMARILLO INTL (KAMA)
---	-------------------------	---	--------	-----------------------------------

DME required

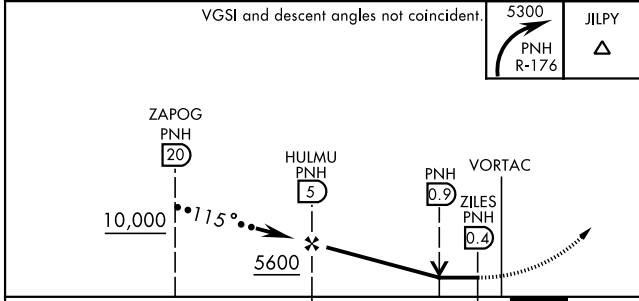
When local altimeter setting not received, use Borger altimeter setting.

MISSED APPROACH: Climbing right turn to 5300 on PNH VORTAC R-176 to JILPY/11 DME and hold.

ATIS 118.85 350.3	AMARILLO APP CON 119.5 307.0	AMARILLO TOWER★ 118.3(CTAF) 257.9	GND CON 121.9 348.6	CLNC DEL 121.65 239.275	ASR
-----------------------------	--	---	-------------------------------	-----------------------------------	-----



EMERG SAFE ALT 100 NM 7500



ELEV	3607	TDZE	3603
------	------	------	------

CATEGORY	C	D	E
S-13	4040-1¼	437	(500-1¼)
CIRCLING	4240-1¾ 633 (700-1¾)	4280-2¼ 673 (700-2¼)	4460-3 853 (900-3)
WITH BORGER ALTIMETER SETTING			
S-13	4200-1¾	597	(600-1¾)
CIRCLING	4400-2¼ 793 (900-2¼)	4440-2¾ 833 (900-2¾)	4620-3 1013 (1100-3)

HIRL all rwys
REIL Rwy 13

HI-VOR or TACAN RWY 13



SC-2, 20 FEB 2025 to 20 MAR 2025

SC-2, 20 FEB 2025 to 20 MAR 2025