

LOC I-AMA 110.3	APP CRS 038°	Rwy Idg 13502
		TDZE 3607
		Apt Elev 3607

ILS or LOC RWY 4

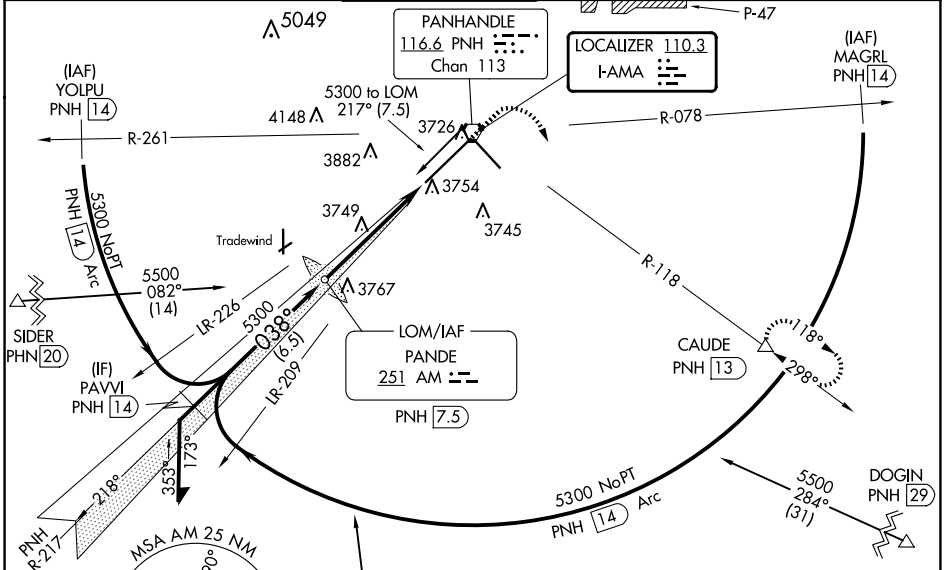
RICK HUSBAND AMARILLO INTL (AMA)

ADF or DME required.

ASR When local altimeter setting not received, use Borger altimeter setting and increase S-ILS 4 DA to 3960 feet and all visibilities to RVR 3000. Increase all MDAs 160 feet and S-LOC 4 visibility Cat C/D/E to RVR 6000 and Circling visibility Cat C/D 1/2 SM. For inop ALS, increase visibility S-ILS 4 Cat E to 4000 RVR and S-LOC 4 Cat C/D/E to RVR 6000. For inop ALS when using Borger altimeter setting, increase visibility S-ILS 4 all Cats to 5500 and S-LOC 4 Cat C/D/E to 1 1/2 SM. * RVR 1800 authorized with use of FD or AP or HUD to DA (NA when using Borger altimeter setting).

MALS MISSED APPROACH: Climb to 4100 then climbing right turn to 5000 on PNH VORTAC R-118 to CAUDE/PNH 13 DME and hold.

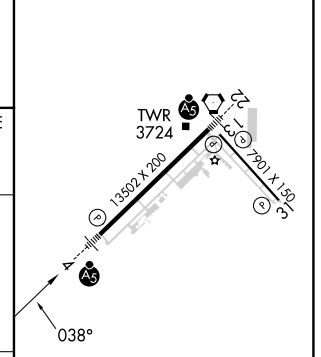
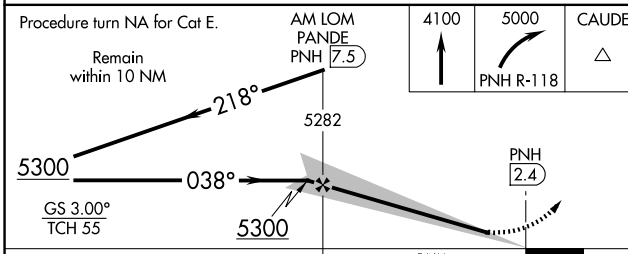
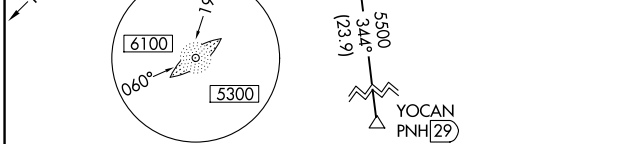
ATIS 118.85 350.3	AMARILLO APP CON* 119.5 307.0	AMARILLO TOWER* 118.3(CTAF) 257.9	GND CON 121.9 348.6	CLNC DEL 121.65 239.275	UNICOM 122.95
-----------------------------	---	---	-------------------------------	-----------------------------------	-------------------------



SC-2, 20 FEB 2025 to 20 MAR 2025

SC-2, 20 FEB 2025 to 20 MAR 2025

ELEV 3607	D TDZE 3607
-----------	--------------------



CATEGORY	A	B	C	D	E	
S-ILS 4*	3807/24 200 (200-1/2)					
S-LOC 4	4000/24	393 (400-1/2)	4000/35	393 (400-3/4)		
C CIRCLING	4080-1	473 (500-1)	4240-1 3/4 633 (700-1 3/4)	4280-2 1/4 673 (700-2 1/4)	4460-3 853 (900-3)	
						REIL Rwy 13 HIRL Rws 4-22 and 13-31
						FAF to MAP 5 NM
						Knots 60 90 120 150 180 Min:Sec 5:00 3:20 2:30 2:00 1:40