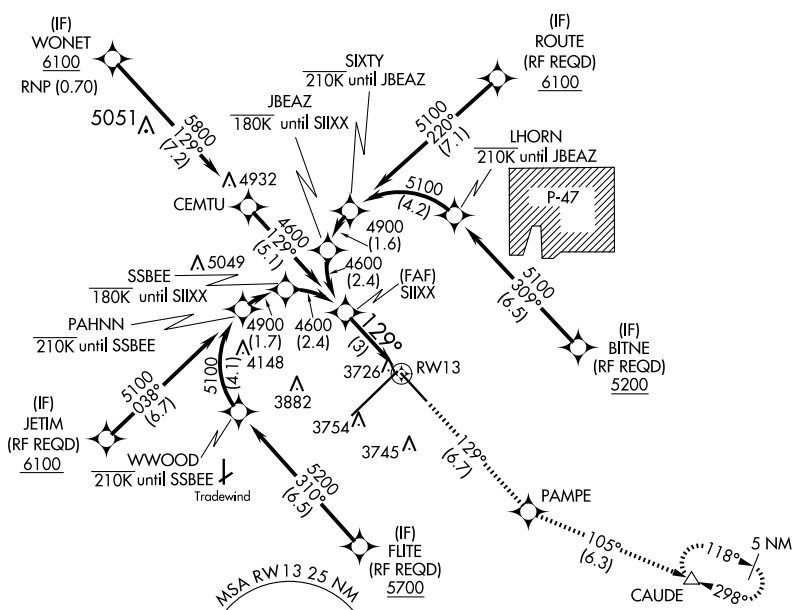


APP CRS	Rwy Idg	7901
129°	TDZE	3603
	Apt Elev	3607

RNAV (RNP) Z RWY 13

RICK HUSBAND AMARILLO INTL (AMA)

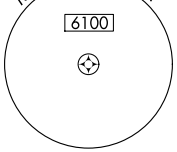
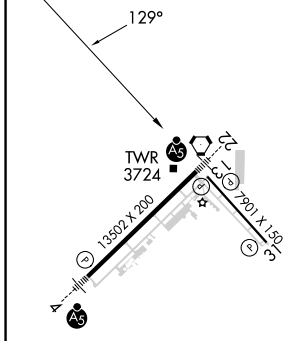
<p>For uncompensated Baro-VNAV systems, procedure NA below -14°C (7°F) or above 51°C (124°F). GPS required.</p>	<p>MISSED APPROACH: Climb to 5400 on track 129° to PAMPE and track 105° to CAUDE and hold.</p>				
	<p>ATIS</p> <p>118.85 350.3</p>	<p>AMARILLO APP CON*</p> <p>119.5 307.0</p>	<p>AMARILLO TOWER*</p> <p>118.3(CTAF) 257.9</p>	<p>GND CON</p> <p>121.9 348.6</p>	<p>CLNC DEL</p> <p>121.65 239.275</p>



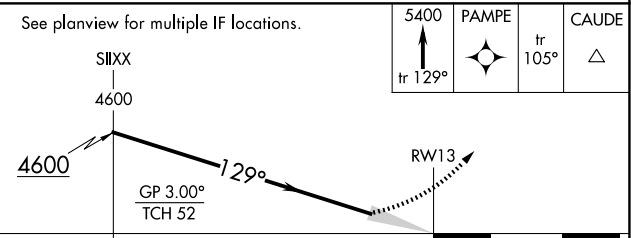
SC-2, 20 FEB 2025 to 20 MAR 2025

SC-2, 20 FEB 2025 to 20 MAR 2025

ELEV	3607	D	TDZE	3603
------	-------------	----------	------	-------------



RNAV 1 - GPS or RADAR REQUIRED



See planview for multiple IF locations.	5400	PAMPE	CAUDE	
	↑	✧	△	
	tr 129°	tr 105°		
CATEGORY	A	B	C	D
RNP 0.30 DA	3976-1¼		373 (400-1¼)	

AUTHORIZATION REQUIRED