

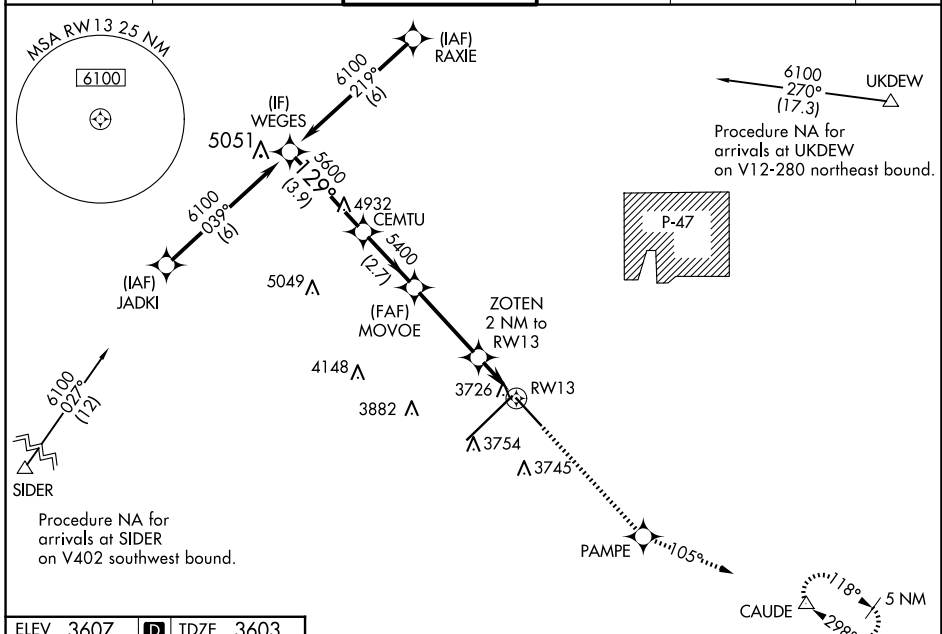
WAAS CH <b>57919</b> <b>W13A</b>	APP CRS <b>129°</b>	Rwy Idg TDZE Apt Elev	<b>7901</b> <b>3603</b> <b>3607</b>
--	------------------------	-----------------------------	---

# RNAV (GPS) Y RWY 13

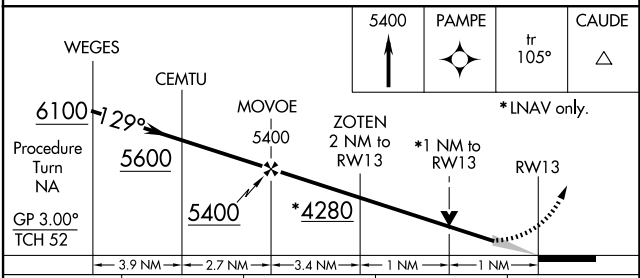
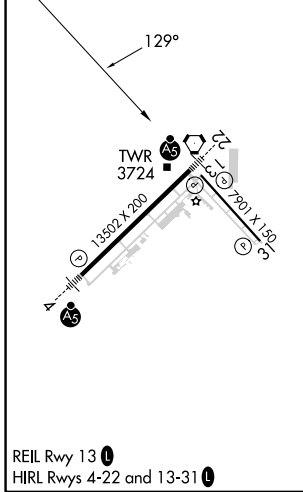
RICK HUSBAND AMARILLO INTL (AMA)

RNP APCH.		MISSED APPROACH: Climb to 5400 direct PAMPE and on track 105° to CAUDE and hold.			
<p>For uncompensated Baro-VNAV systems, LNAV/VNAV NA below -22°C or above 41°C.</p>		ASR			

ATIS <b>118.85 350.3</b>	AMARILLO APP CON* <b>119.5 307.0</b>	AMARILLO TOWER* <b>118.3(CTAF) 257.9</b>	GND CON <b>121.9 348.6</b>	CLNC DEL <b>121.65 239.275</b>	UNICOM <b>122.95</b>
-----------------------------	---	---	-------------------------------	-----------------------------------	-------------------------



ELEV 3607	<b>D</b>	TDZE 3603
-----------	----------	-----------



CATEGORY	A	B	C	D
LPV DA		3803-3/4	200 (200-3/4)	
LNAV/VNAV DA		3976-1 1/4	373 (400-1 1/4)	
LNAV MDA		3980-1	377 (400-1)	3980-1 1/4 377 (400-1 1/4)
<b>C</b> CIRCLING	4080-1	473 (500-1)	4240-1 3/4 633 (700-1 3/4)	4280-2 1/4 673 (700-2 1/4)

SC-2, 20 FEB 2025 to 20 MAR 2025

SC-2, 20 FEB 2025 to 20 MAR 2025