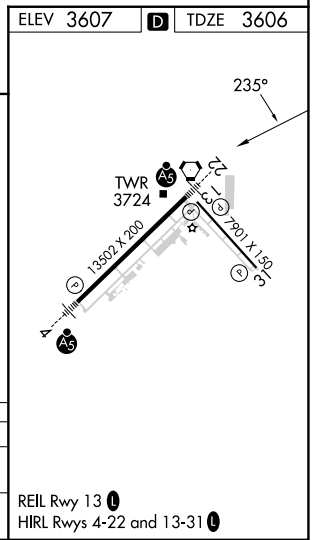
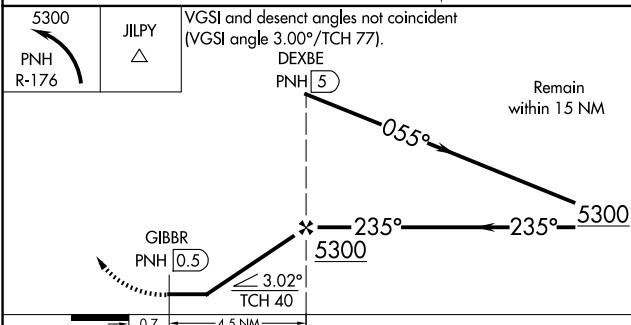
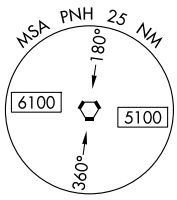
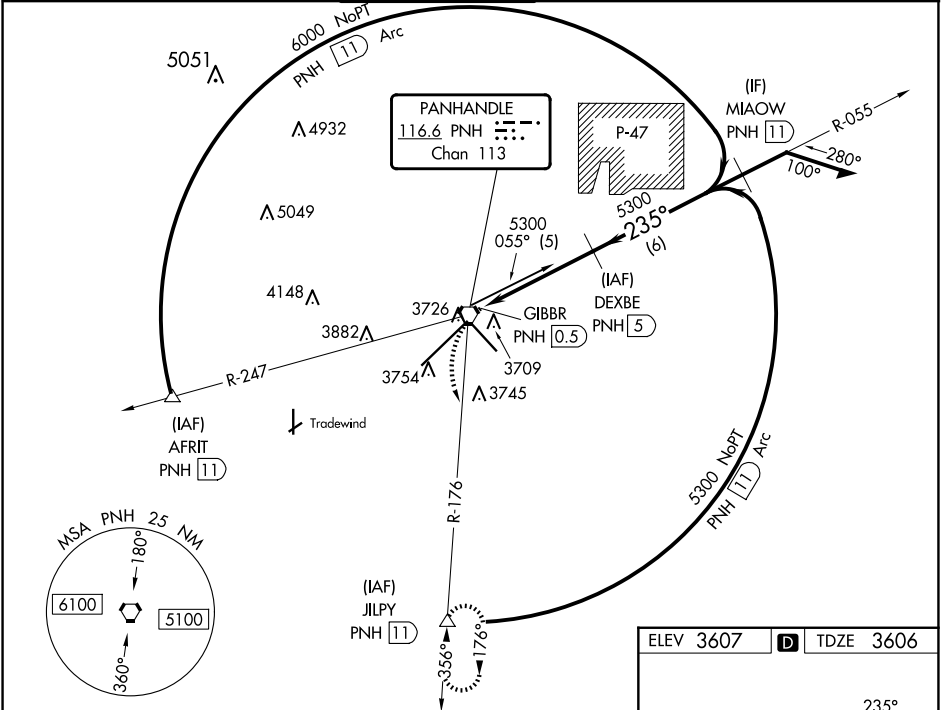


VORTAC PNH 116.6 Chan 113	APP CRS 235°	Rwy Idg 13502 TDZE 3606 Apt Elev 3607
---	------------------------	--

VOR RWY 22

RICK HUSBAND AMARILLO INTL (AMA)

DME required. For inop ALS, increase Cat C visibility to 1 SM.		MALSR	MISSED APPROACH: Climbing left turn to 5300 on PNH R-176 to JILPY/11 DME and hold.		
ATIS 118.85 350.3	AMARILLO APP CON* 119.5 307.0	AMARILLO TOWER* 118.3(CTAF) 257.9	GND CON 121.9 348.6	CLNC DEL 121.65 239.275	UNICOM 122.95



CATEGORY	A	B	C	D	E
S-22	3960-1/2 354 (400-1/2)	3960-3/4 354 (400-3/4)	3960-1 354 (400-1)	3960-1 354 (400-1)	3960-1 354 (400-1)
C CIRCLING	4080-1 473 (500-1)	4240-1 3/4 633 (700-1 3/4)	4280-2 1/4 673 (700-2 1/4)	4460-3 853 (900-3)	4460-3 853 (900-3)

REIL Rwy 13
HIRL Rws 4-22 and 13-31

SC-2, 20 FEB 2025 to 20 MAR 2025

SC-2, 20 FEB 2025 to 20 MAR 2025