

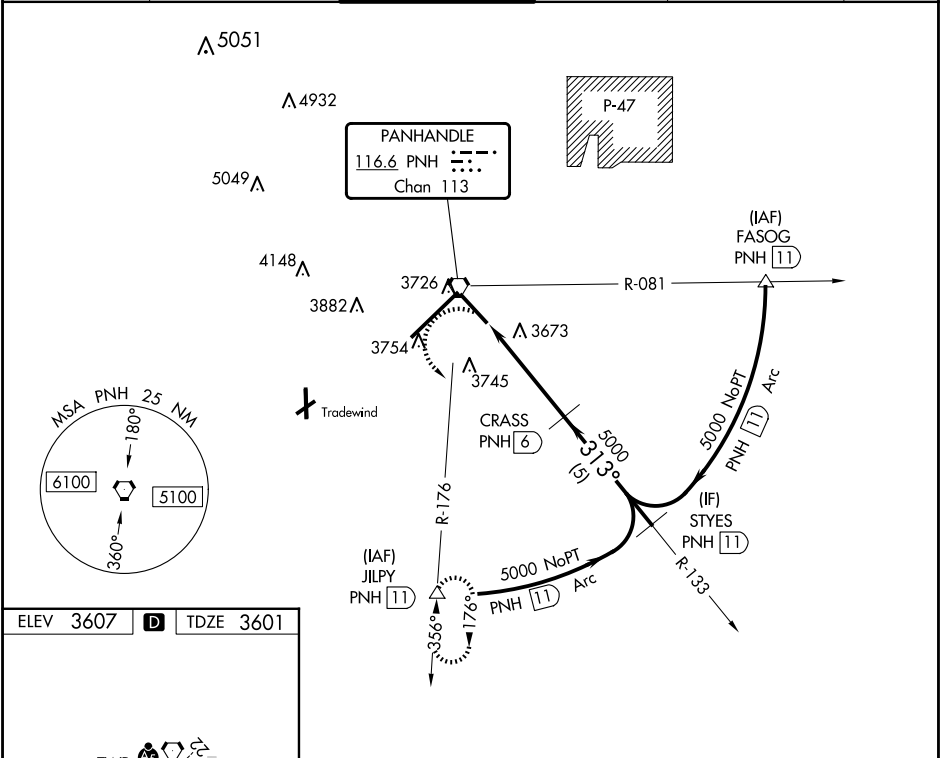
VORTAC PNH 116.6 Chan 113	APP CRS 313°	Rwy Idg TDZE Apt Elev	7901 3601 3607
---	------------------------	-----------------------------	---

VOR RWY 31

RICK HUSBAND AMARILLO INTL (AMA)

DME required.		MISSED APPROACH: Climbing left turn to 5300 on PNH VORTAC R-176 to JILPY/11 DME and hold.			
ATIS 118.85 350.3	AMARILLO APP CON* 119.5 307.0	AMARILLO TOWER* 118.3(CTAF) 257.9	GND CON 121.9 348.6	CLNC DEL 121.65 239.275	UNICOM 122.95

ATIS 118.85 350.3	AMARILLO APP CON* 119.5 307.0	AMARILLO TOWER* 118.3(CTAF) 257.9	GND CON 121.9 348.6	CLNC DEL 121.65 239.275	UNICOM 122.95
-----------------------------	---	---	-------------------------------	-----------------------------------	-------------------------



ELEV 3607	D	TDZE 3601			
REIL Rwy 13 HIRL Rwys 4-22 and 13-31 FAF to MAP 4.4 NM					
Knots	60	90	120	150	180
Min:Sec	4:24	2:56	2:12	1:46	1:28

5300	JILPY	VGSJ and descent angles not coincident (VGSJ Angle 3.00°/TCH 52).		STYES	
PNH R-176	△	CRASS	PNH (6)	PNH (11)	
PNH (1.6)	PNH (2.6)	5000	313°	5000	
1 NM	3.4 NM	5 NM			
CATEGORY	A	B	C	D	E
S-31	3960-1 359 (400-1)		3960-1¼ 359 (400-1¼)		
CIRCLING	4080-1	473 (500-1)	4240-1¾ 633 (700-1¾)	4280-2¼ 673 (700-2¼)	4460-3 853 (900-3)

SC-2, 20 FEB 2025 to 20 MAR 2025

SC-2, 20 FEB 2025 to 20 MAR 2025