

LOC I-AIW <b>108.9</b>	APP CRS <b>309°</b>	Rwy Idg <b>9002</b>
		TDZE <b>733</b>
		Apt Elev <b>777</b>

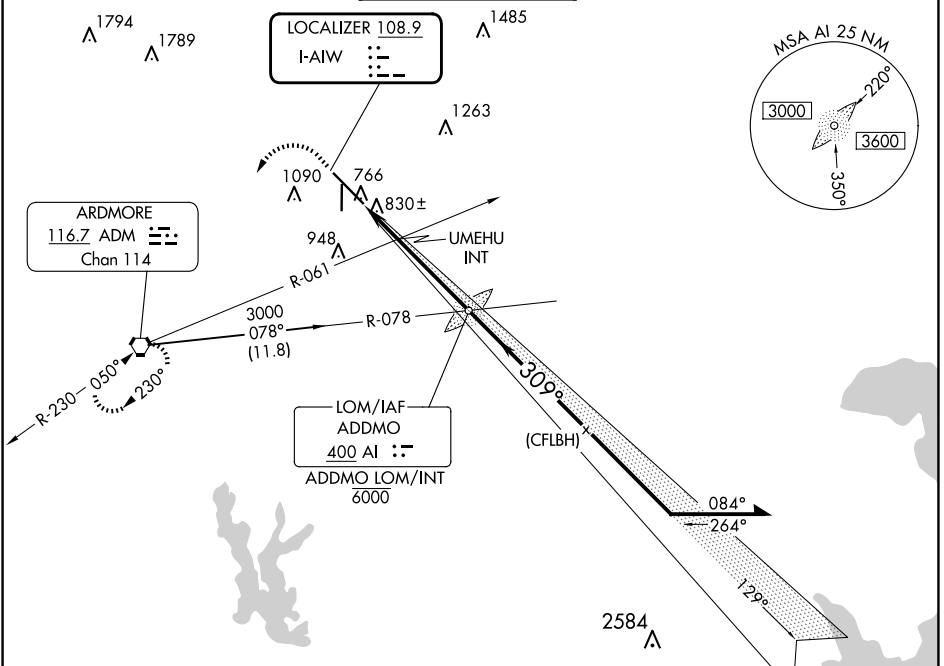
# ILS or LOC RWY 31

ARDMORE MUNI (ADM)

**⚠** Autopilot coupled approach NA below 1360. Inop table does not apply to S-ILS 31 all Cats, S-LOC 31 Cats A and B, and UMEHU fix minimums S-LOC 31 Cats A and B. For inop ALS, increase UMEHU fix minimums S-LOC 31 Cats C and D visibility to 1 SM.

**MALSR**  
 MISSED APPROACH: Climb to 2000 then climbing left turn to 3000 direct ADM VORTAC and hold.

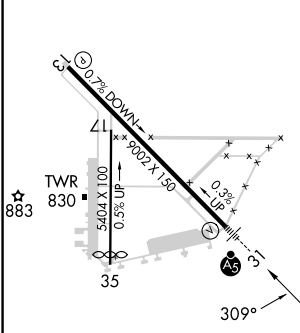
ATIS <b>125.6</b>	FORT WORTH CENTER <b>124.75 323.0</b>	ARDMORE TOWER ★ <b>118.5 (CTAF) 0 257.7</b>	GND CON <b>121.8</b>	UNICOM <b>122.95</b>
----------------------	------------------------------------------	------------------------------------------------	-------------------------	-------------------------



SC-1, 20 FEB 2025 to 20 MAR 2025

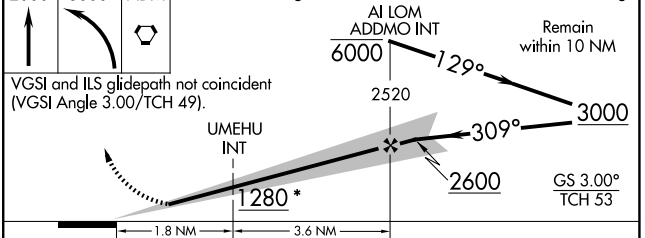
SC-1, 20 FEB 2025 to 20 MAR 2025

ELEV 777	<b>D</b>	TDZE 733
----------	----------	----------



FAF to MAP 5.4 NM

Knots	60	90	120	150	180
Min:Sec	5:24	3:36	2:42	2:10	1:48



CATEGORY	A	B	C	D
S-ILS 31	936-1/2 203 (200-1/2)			
S-LOC 31*	1280-1/2	547 (600-1/2)	1280-1 1/8	547 (600-1 1/8)
CIRCLING	1300-1 523 (600-1)	1440-1 663 (700-1)	1500-2 723 (800-2)	1700-3 923 (1000-3)
UMEHU FIX MINIMUMS (DUAL RECEIVERS REQUIRED)				
S-LOC 31	1080-1/2	347 (400-1/2)	1080-5/8	347 (400-5/8)
CIRCLING	1300-1 523 (600-1)	1440-1 663 (700-1)	1500-2 723 (800-2)	1700-3 923 (1000-3)