

LOC/DME I-OMO <b>111.55</b> Chan <b>52 (Y)</b>	APP CRS <b>095°</b>	Rwy Idg <b>9000</b> TDZE <b>1000</b> Apt Elev <b>1026</b>
--	------------------------	--

**ILS RWY 10 (CAT II & III)**  
HARTSFIELD/JACKSON ATLANTA INTL (ATL)

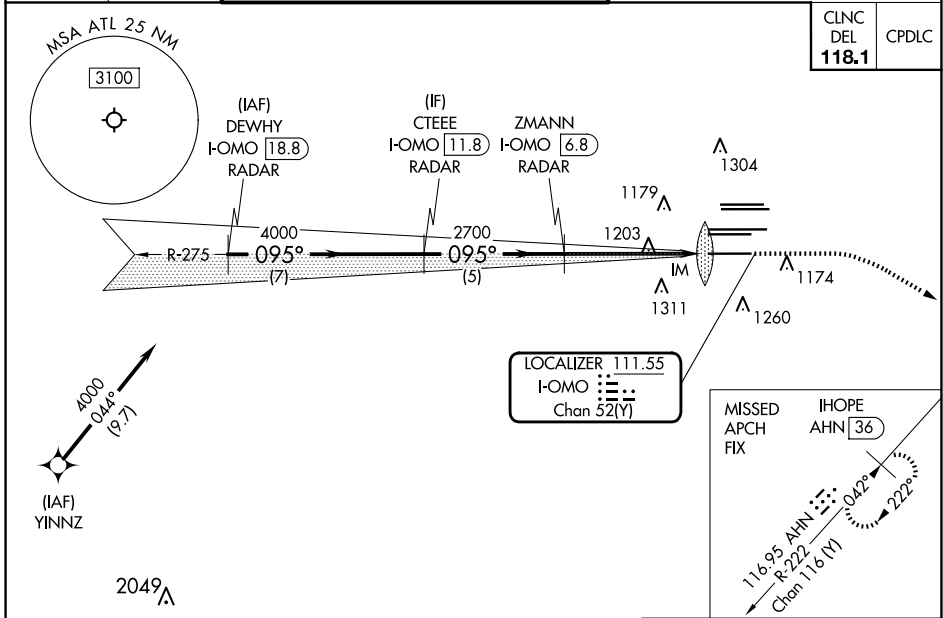
DME or RADAR required. RNP APCH - GPS from YINNZ.

Simultaneous approach authorized with Rwy 9L or 8R or 8L, or Rwy's 9L and 8L.

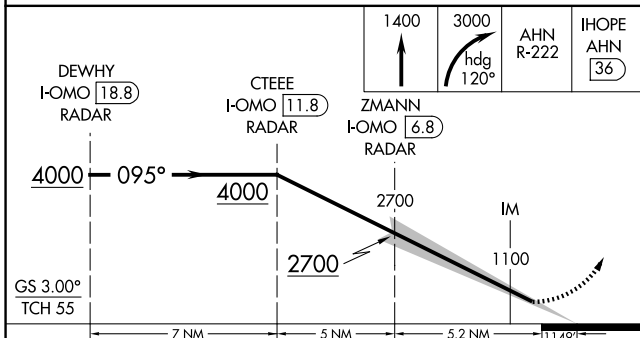
ALSF-2

MISSED APPROACH: Climb to 1400 then climbing right turn to 3000 on heading 120° and AHN R-222 to IHOPE/AHN 36 DME and hold.

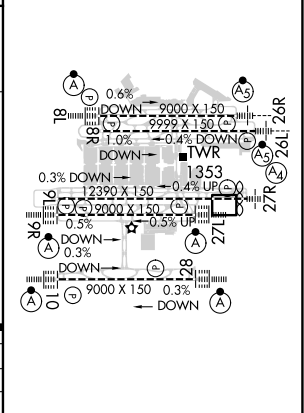
D-ATIS ARR <b>119.65</b>	ATLANTA APP CON <b>127.9 379.9</b>	ATLANTA TOWER 8L-26R 8R-26L 9L-27R 9R-27L 10-28 RWY'S <b>119.1 125.325 123.85 119.3 119.5 254.4</b>	ALL RWY'S <b>121.9</b>	GND CON 8L-26R, 8R-26L 9L-27R, 9R-27L 10-28 RWY'S <b>121.75 121.65 254.4</b>	ALL RWY'S <b>254.4</b>
-----------------------------	--	---	------------------------------	--	------------------------------



ELEV	1026	<input checked="" type="checkbox"/> D	TDZE	1000
------	------	---------------------------------------	------	------



CATEGORY	A	B	C	D
S-ILS 10	CAT II RA 110/12 100 DA 1100			
S-ILS 10	CAT III RVR 07			



**CATEGORY II & III ILS - SPECIAL AIRCREW & AIRCRAFT CERTIFICATION REQUIRED**

SE-4, 20 FEB 2025 to 20 MAR 2025