

LOC/DME I-OMO 111.55	APP CRS 095°	Rwy ldg 9000
Chan 52 (Y)		TDZE 1000
		Apt Elev 1026

ILS RWY 10 (SA CAT I)

HARTSFIELD/JACKSON ATLANTA INTL (ATL)

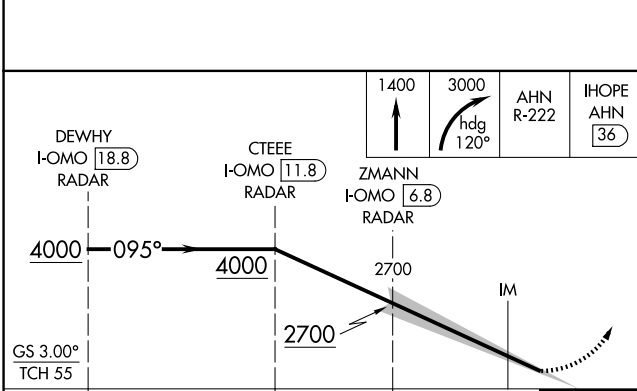
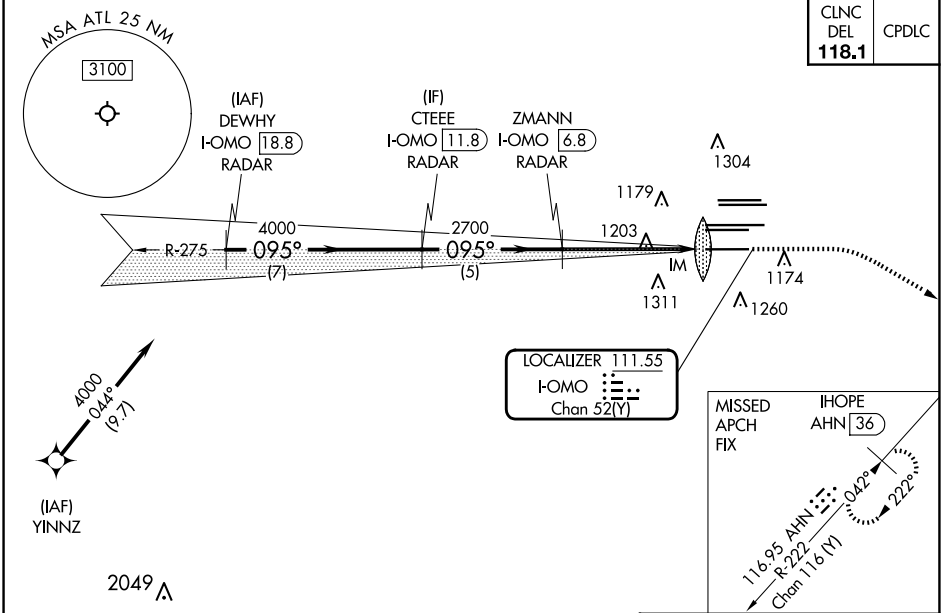
DME or RADAR required. RNP APCH - GPS from YINNZ.

Simultaneous approach authorized with Rwy 9L or 8R or 8L, or Rwy 9L and 8L. Requires specific OPSPEC, MSPEC, or LOA approval and use of HUD to DH.

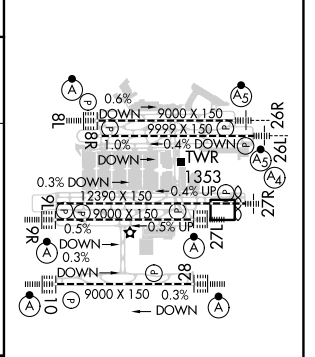
ALSF-2

MISSED APPROACH: Climb to 1400 then climbing right turn to 3000 on heading 120° and AHN R-222 to IHOPE/AHN 36 DME and hold.

D-ATIS ARR 119.65	ATLANTA APP CON 127.9 379.9	ATLANTA TOWER 8L-26R 8R-26L 9L-27R 9R-27L 10-28 RWYS				ALL RWYS	GND CON 8L-26R,8R-26L 9L-27R,9R-27L 10-28	ALL RWYS 254.4
DEP 125.55	127.9 379.9	119.1 125.325	123.85	119.3	119.5	254.4	121.9	121.75 121.65 254.4



ELEV	1026	TDZE	1000
------	------	------	------



CATEGORY	A	B	C	D
S-ILS 10	RA 180/14 150 DA 1150			
SA CATEGORY I ILS - SPECIAL AIRCREW & AIRCRAFT CERTIFICATION REQUIRED				

HIRL all Rwy's
TDZ/CL Rwy's 8L,
9R, 10, 26R, 27L and 28

SE-4, 20 FEB 2025 to 20 MAR 2025

SE-4, 20 FEB 2025 to 20 MAR 2025