

LOC/DME I-GXZ 110.1 Chan 38	APP CRS 275°	Rwy ldg TDZE Apt Elev 8500 990 1026
---	------------------------	---

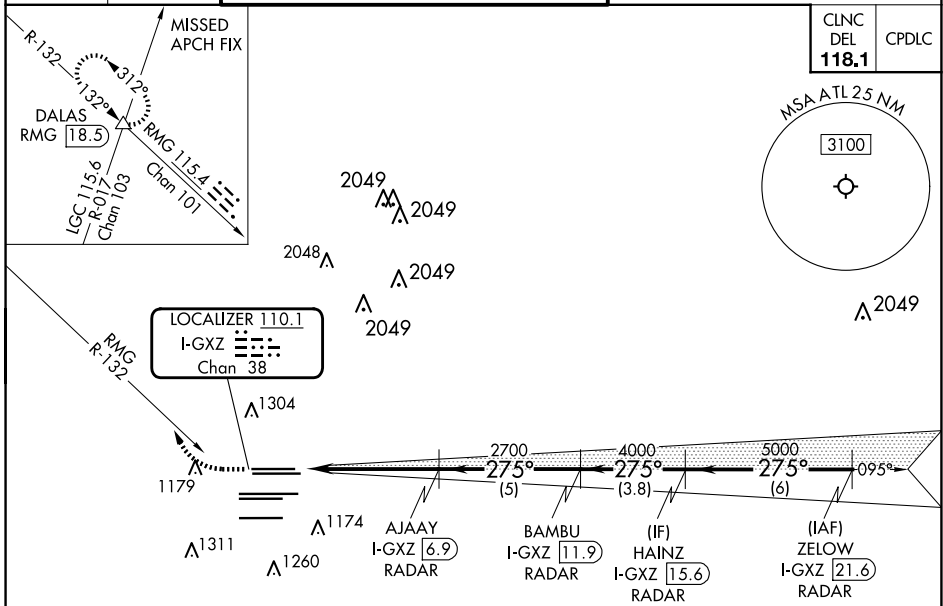
ILS RWY 26R (SA CAT I & II)
HARTSFIELD/JACKSON ATLANTA INTL (ATL)

RADAR required.

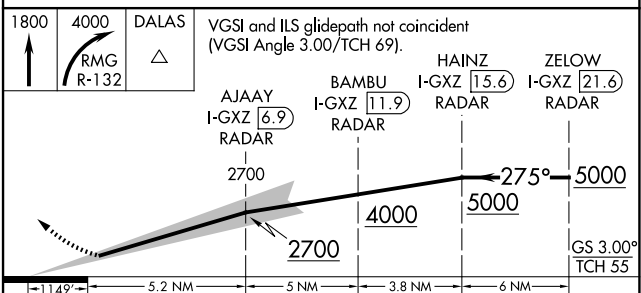
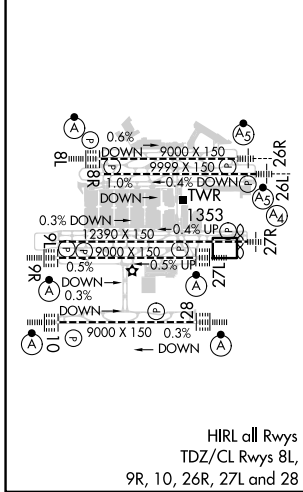
SA CAT I/II: Requires specific OPSPEC, MSPEC, or LOA approval. Simultaneous approach authorized.

MALSR
MISSED APPROACH: Climb to 1800 then climbing right turn to 4000 on RMG VORTAC R-132 to DALAS INT/RMG 18.5 DME and hold.

D-ATIS ARR 119.65	ATLANTA APP CON DEP 127.9 379.9	ATLANTA TOWER 8L-26R 8R-26L 9L-27R 9R-27L 10-28 RWYS 119.1 125.325 123.85 119.3 119.5 254.4	ALL RWYS 121.9	GND CON (8L-26R,8R-26L) (9L-27R,9R-27L) 10-28 121.75 121.65 254.4	ALL RWYS
-----------------------------	--	--	-----------------------------	--	-------------



ELEV 1026	D TDZE 990
-----------	-------------------



1149°	5.2 NM	5 NM	3.8 NM	6 NM
CATEGORY	A	B	C	D
S-ILS 26R	SA CAT I	RA 170/14	150 DA 1140	
S-ILS 26R	SA CAT II	RA 110/12	100 DA 1090	

SA CATEGORY I & II ILS - SPECIAL AIRCREW & AIRCRAFT CERTIFICATION REQUIRED

SE-4, 20 FEB 2025 to 20 MAR 2025

SE-4, 20 FEB 2025 to 20 MAR 2025