

ATLANTA, GEORGIA

AL-26 (FAA)

25051

LOC/DME I-FSQ 108.5 Chan 22	APP CRS 275°	Rwy Idg TDZE Apt Elev	8865 999 1026
--	------------------------	-----------------------------	--

ILS RWY 27L (CAT II)

HARTSFIELD/JACKSON ATLANTA INTL (ATL)

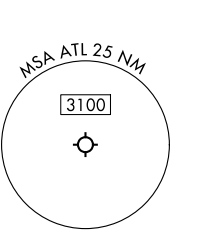
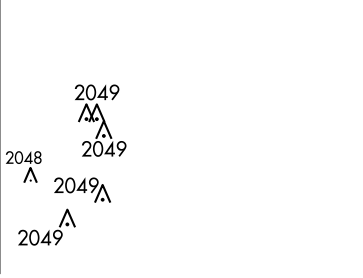
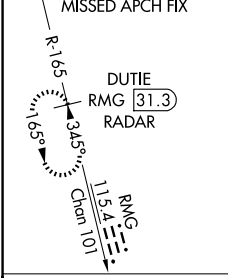
DME or RADAR required.
RADAR required for procedure entry.

Simultaneous approach authorized.



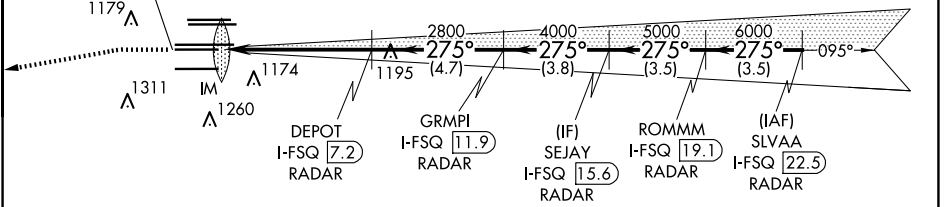
MISSED APPROACH: Climb to 1500 then climbing left turn to 4000 on heading 265° and RMG VORTAC R-165 to DUTIE/RMG 31.3 DME/RADAR and hold.

D-ATIS ARR 119.65	ATLANTA APP CON DEP 125.55	ATLANTA TOWER 8L-26R 8R-26L 9L-27R 9R-27L 10-28 RWYS	ALL RWYS 119.1 125.325 123.85 119.3 119.5 254.4	GND CON ALL RWYS 121.9 121.75 121.65 254.4
-----------------------------	---	---	--	--

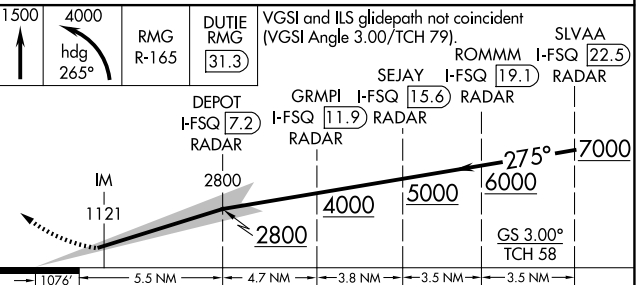
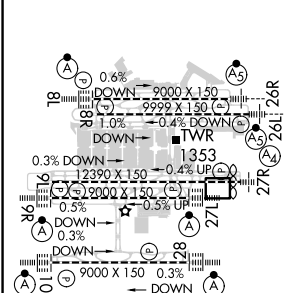


CINC DEL	CPDLC
118.1	

LOCALIZER 108.5
I-FSQ
Chan 22



ELEV 1026	TDZE 999
-----------	----------



CATEGORY	A	B	C	D
S-ILS 27L	RA 127/12 100 DA 1099			

CATEGORY II ILS- SPECIAL AIRCREW & AIRCRAFT CERTIFICATION REQUIRED

HIRL all Rwsy
TDZ/CL Rwsy 8L, 9R, 10, 26R, 27L and 28

ATLANTA, GEORGIA
Amdt 19 22APR21

HARTSFIELD/JACKSON ATLANTA INTL (ATL)
33°38'N-84°26'W

ILS RWY 27L (CAT II)

SE-4, 20 FEB 2025 to 20 MAR 2025

SE-4, 20 FEB 2025 to 20 MAR 2025