

ATLANTA, GEORGIA

AL-26 (FAA)

25051

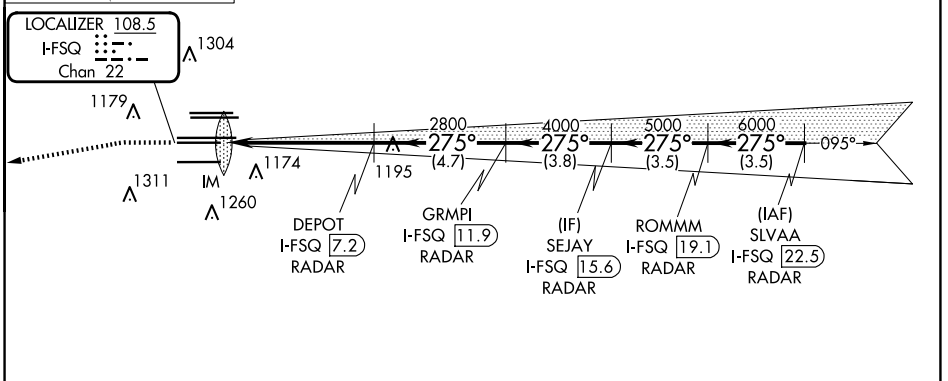
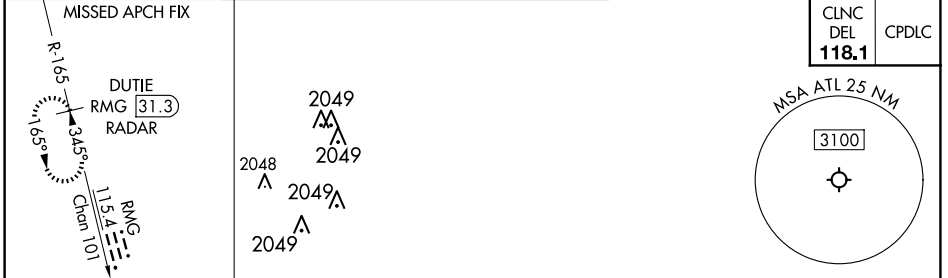
LOC/DME I-FSQ <b>108.5</b> Chan 22	APP CRS <b>275°</b>	Rwy ldg TDZE Apt Elev	<b>8865</b> <b>999</b> <b>1026</b>
--	------------------------	-----------------------------	--

# ILS RWY 27L (SA CAT I)

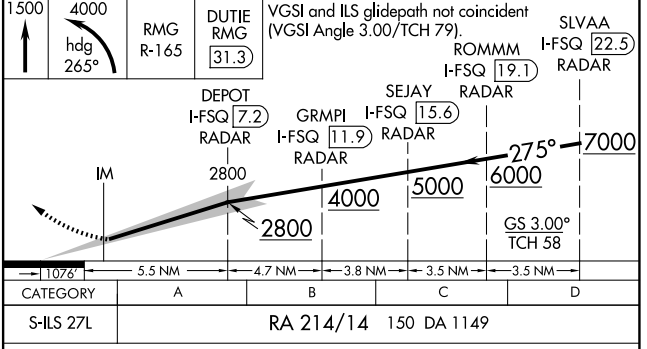
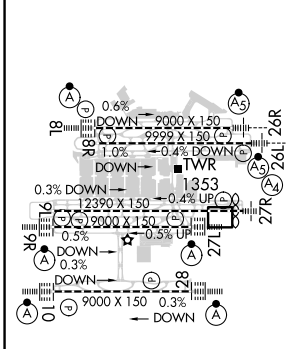
HARTSFIELD/JACKSON ATLANTA INTL (ATL)

DME or RADAR required. RADAR required for procedure entry.		ALSF-2	MISSED APPROACH: Climb to 1500 then climbing left turn to 4000 on heading 265° and RMG VORTAC R-165 to DUTIE/RMG 31.3 DME/RADAR and hold.
Simultaneous approach authorized. Requires specific OPSPEC, MSPEC, or LOA approval.			

D-ATIS ARR <b>119.65</b>	ATLANTA APP CON DEP <b>125.55</b>	ATLANTA TOWER 8L-26R 8R-26L 9L-27R 9R-27L 10-28 RWYs <b>119.1 125.325 123.85 119.3 119.5 254.4</b>	ALL RWYs <b>121.9</b>	GND CON ALL RWYs <b>121.75 121.65 254.4</b>
-----------------------------	---	--	-----------------------------	---



ELEV 1026	<b>D</b>	TDZE 999
-----------	----------	----------



HIRL all Rwys  
TDZ/CL Rwys 8L, 9R,  
10, 26R, 27L and 28

**SA CATEGORY I ILS- SPECIAL AIRCREW & AIRCRAFT CERTIFICATION REQUIRED**

SE-4, 20 FEB 2025 to 20 MAR 2025

SE-4, 20 FEB 2025 to 20 MAR 2025