

LOC/DME I-PKU 111.75 Chan 54(Y)	APP CRS 275°	Rwy ldg TDZE Apt Elev 9000 998 1026
--	------------------------	---

ILS RWY 28 (CAT II)

HARTSFIELD/JACKSON ATLANTA INTL (ATL)

RNAV 1-GPS or RADAR required for procedure entry. From TERII: RNAV 1-GPS required. DME or RADAR required.	ALSF-2 	MISSED APPROACH: Climb to 1500 then climbing left turn to 3000 on heading 216° and LGC VORTAC R-062 to PAJVO/LGC 28 DME/RADAR and hold.
--	------------	---

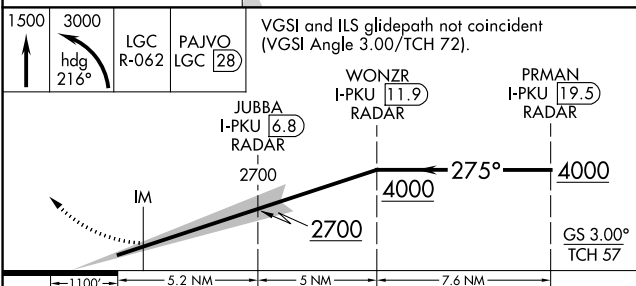
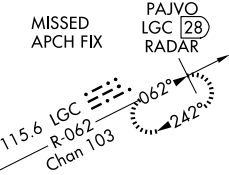
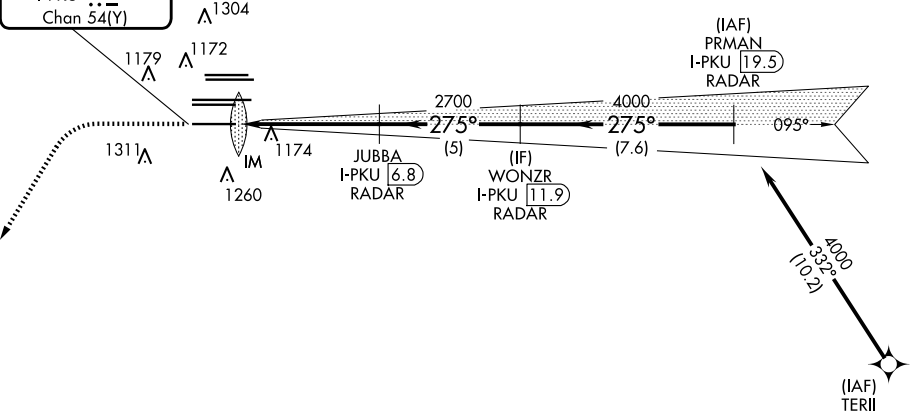
Simultaneous approach authorized.

D-ATIS ARR 119.65	ATLANTA APP CON 127.9 379.9	ATLANTA TOWER 8L-26R 8R-26L 9L-27R 9R-27L 10-28 RWYS 119.1 125.325 123.85 119.3 119.5 254.4	ALL RWYS 121.9	GND CON 10-28 121.75	ALL RWYS 254.4
-----------------------------	-----------------------------------	--	--------------------------	-----------------------------------	-----------------------------

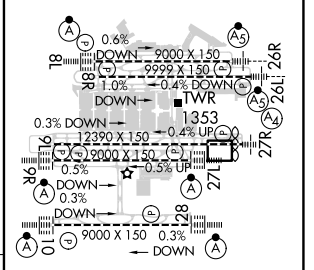
CLNC DEL 118.1	CPDLC
-----------------------------	-------

△ 2049
△ 2049

LOCALIZER 111.75
I-PKU
Chan 54(Y)



ELEV 1026	D	TDZE 998
-----------	---	----------



CATEGORY	A	B	C	D
S-ILS 28	RA 188/12		100 DA 1098	
CATEGORY II ILS - SPECIAL AIRCREW & AIRCRAFT CERTIFICATION REQUIRED				

HIRL all Rwys
TDZ/CL Rwys 8L, 9R,
10, 26R, 27L and 28

SE-4, 20 FEB 2025 to 20 MAR 2025

SE-4, 20 FEB 2025 to 20 MAR 2025